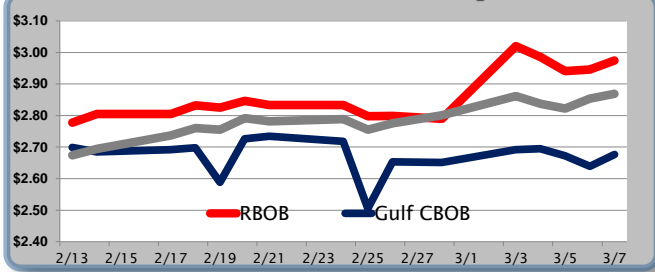


Gasoline

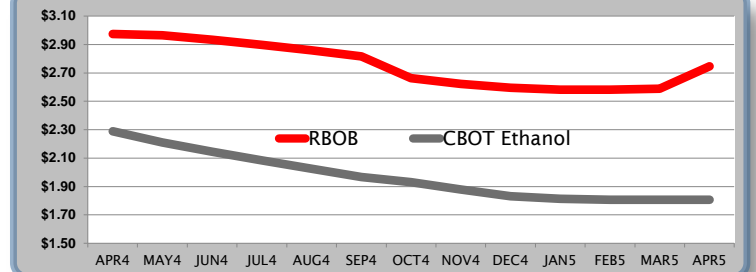
	RBOB	Change	Gulf CBOB	Change	Group Sub NL	Change	Gulf Basis	Group Basis
3/10	\$2.9418	-\$0.0320	\$2.6444		\$2.8368			
3/7	\$2.9738	\$0.0283	\$2.6764	\$0.0375	\$2.8688	\$0.0150	-29.50	-10.25
3/6	\$2.9455	\$0.0052	\$2.6389	-\$0.0334	\$2.8538	\$0.0316	-31.05	-9.45
3/5	\$2.9403	-\$0.0450	\$2.6723	-\$0.0225	\$2.8222	-\$0.0150	-26.70	-11.80
3/4	\$2.9853	-\$0.0350	\$2.6948	\$0.0028	\$2.8372	-\$0.0247	-28.55	-14.30
3/3	\$3.0203	\$0.2305	\$2.6920	\$0.0413	\$2.8619	\$0.0613	-32.20	-15.20
2/28	\$2.7898	\$0.0280	\$2.6507	\$0.0553	\$2.8006	\$0.0331	-32.55	-17.55

RBOB Technicals		Resistance
Indicator	Direction	
MACD	Bullish	3.1095 Aug 2013 High
Stochastics	Topping	3.0538 2014 High
RSI	Topping	2.8783 14 Day MA
ADX	Bullish	2.7764 200 Day MA
Momentum	Topping	Support
Bias:	Neutral	

Gasoline History



Gasoline Futures Fwd Curve

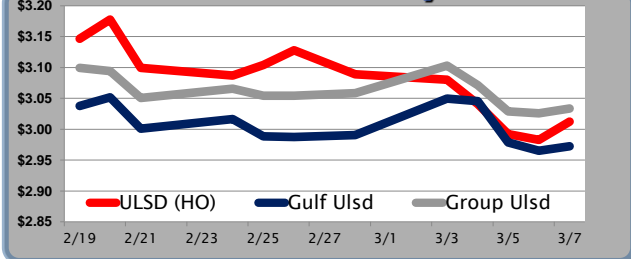


Diesel

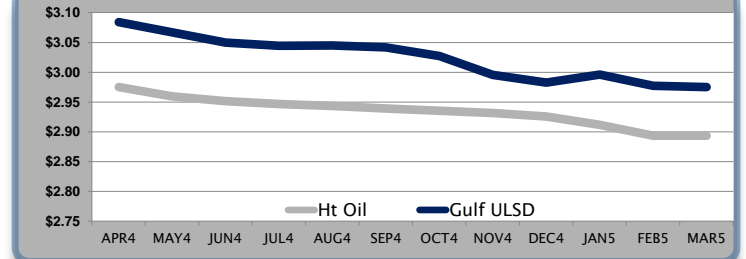
	ULSD (HO)	Change	Gulf Ulsd	Change	Group Ulsd	Change	Gulf Basis	Group Basis
3/10	\$2.9721	-\$0.0400	\$2.9325		\$2.9935			
3/7	\$3.0121	\$0.0291	\$2.9725	\$0.0073	\$3.0335	\$0.0078	-3.45	2.65
3/6	\$2.9830	-\$0.0092	\$2.9652	-\$0.0132	\$3.0257	-\$0.0032	-2.45	3.70
3/5	\$2.9922	-\$0.0485	\$2.9784	-\$0.0672	\$3.0289	-\$0.0427	-1.25	3.70
3/4	\$3.0407	-\$0.0398	\$3.0456	-\$0.0041	\$3.0716	-\$0.0316	0.95	3.65
3/3	\$3.0805	-\$0.0088	\$3.0497	\$0.0592	\$3.1032	\$0.0447	-1.95	3.30
2/28	\$3.0893	\$0.0028	\$2.9905	-\$0.0051	\$3.0585	\$0.0085	-2.85	4.05

HO Technicals		Resistance
Indicator	Direction	
MACD	Bearish	3.1848 Feb High
Stochastics	Bearish	3.0122 100 Day MA
RSI	Bearish	2.9637 March Low
ADX	Neutral	2.9055 Jan Low
Momentum	Bearish	Support
Bias:	Bearish	

Diesel History



Diesel Futures Fwd Curve



Crude

	WTI	Change	Brent	Change	Gulf Gas	Vs WTI		Vs Brent		Group / WCS			
3/10	\$101.28	-\$1.30	\$107.85	-\$1.15		Gulf Diesel	3/2/1	5/3/2		3/2/1			
3/7	\$102.58	\$1.02	\$109.00	\$0.90	\$9.83	\$22.27	\$13.97	\$14.80	\$3.41	\$15.85	\$7.55	\$8.38	43.29
3/6	\$101.56	\$0.11	\$108.10	\$0.34	\$9.27	\$22.98	\$13.84	\$14.76	\$2.73	\$16.44	\$7.30	\$8.22	44.43
3/5	\$101.45	-\$1.88	\$107.76	-\$1.54	\$10.79	\$23.64	\$15.07	\$15.93	\$4.48	\$17.33	\$8.76	\$9.62	43.25
3/4	\$103.33	-\$1.59	\$109.30	-\$1.90	\$9.85	\$24.59	\$14.76	\$15.75	\$3.88	\$18.62	\$8.79	\$9.78	43.90

Refinery Margins

Economic Indicators

Commodity Futures

	Settle	Change		Settle	Change
S&P 500	1,878	1.01	Ethanol	2.288	-0.040
DJIA	16,453	30.83	NatGas	4.643	0.03
Nasdaq	4,336	-15.90	Gold	1,337	-1.20
EUR/USD	1.3884	0.0008	Silver	21	-0.11
USD Index	79.73	0.01	Copper	3.12	-0.04
US 10 Year Yld	2.79%	0.00	FCOJ	155.00	-1.30
Spanish 10 Year Yld	3.32%	0.00	Corn	476.75	-4.25
S&P Volatility Index (VIX)	14.11	-0.10	Soy	1,448	-9.25
Baltic Dry Freight Index	1,543	63.00	Wheat	652.50	6.25
Euro STX Stock Index	3,100	3.00	Ethanol RINs	0.550	-0.020
Nikkei 225 Index	15,120	-153.93	Butane	1.27	0.000
German DAX Index	9,312	-38.98	Propane	1.09	0.000

Gulf Coast ULSD Fwd Price Indication

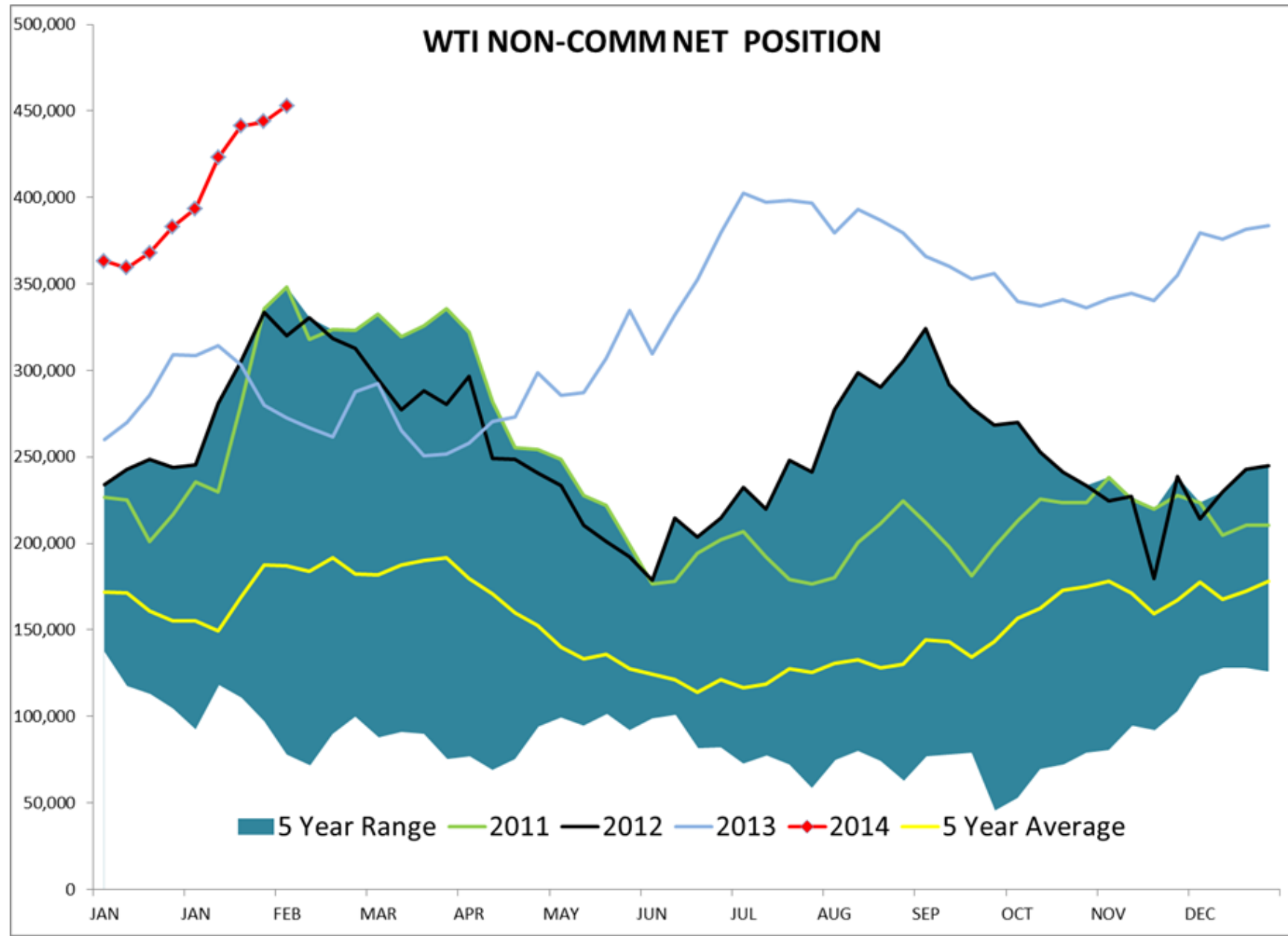
Indicative forward prices for ULSD at Gulf Coast area terminals. Prices are estimates only.

Del. Month	Price	Differential	3 Mo. Avg	6 Mo. Avg
APR4	\$3.0839	\$0.1085		
MAY4	\$3.0669	\$0.1074		
JUN4	\$3.0497	\$0.0980	\$3.0668	
JUL4	\$3.0444	\$0.0975		
AUG4	\$3.0447	\$0.1015		
SEP4	\$3.0418	\$0.1025	\$3.0436	\$3.0552
OCT4	\$3.0270	\$0.0915		
NOV4	\$2.9955	\$0.0640		
DEC4	\$2.9825	\$0.0565	\$3.0017	
JAN5	\$2.9960	\$0.0840		
FEB5	\$2.9774	\$0.0840		
MAR5	\$2.9754	\$0.0840	\$2.9829	\$2.9923
12 Month Avg	\$3.0238	\$0.0900		

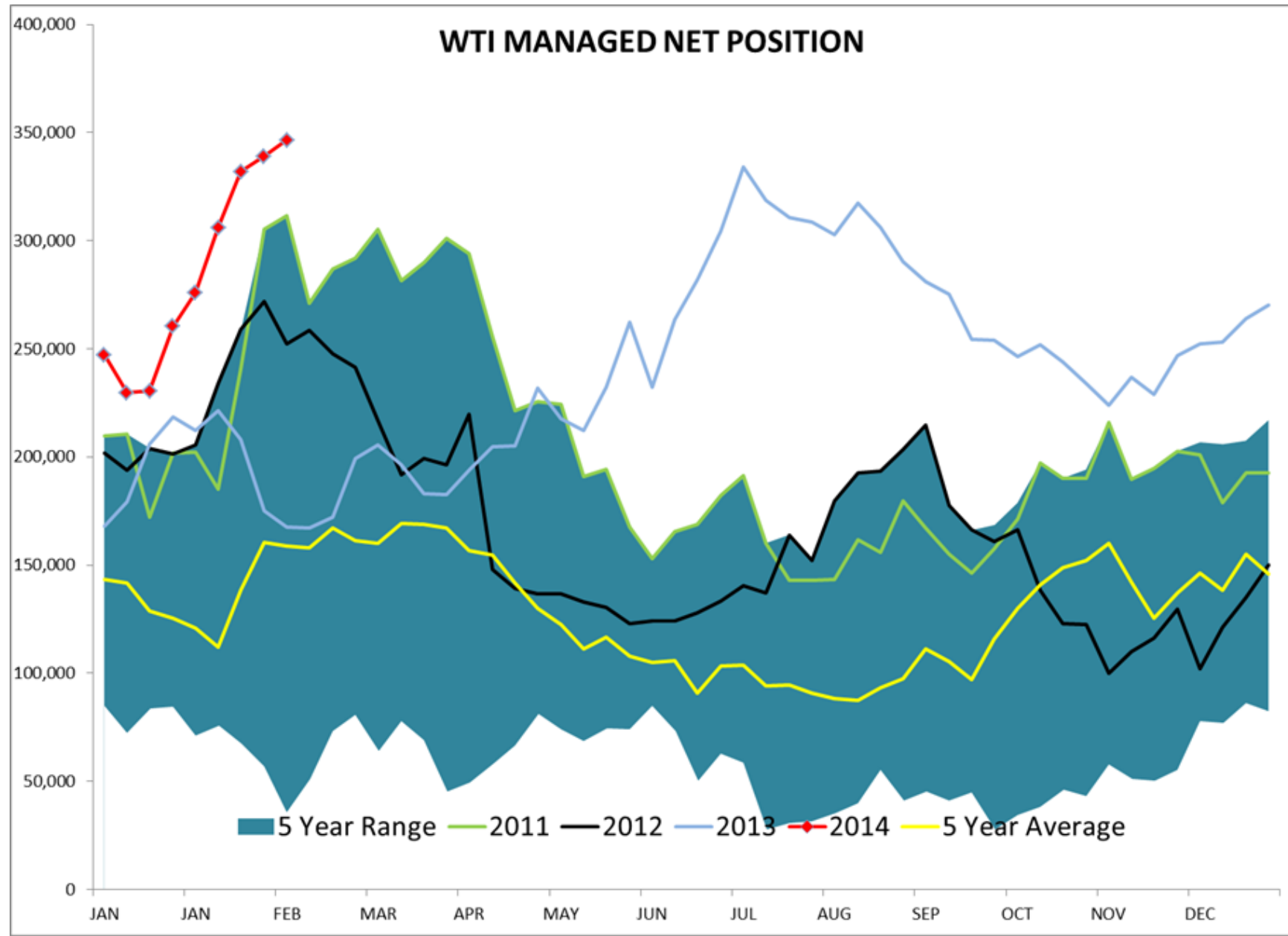
*SOURCES: Nymex, CBOT, NYSE, ICE, NASDAQ, CME Group, CBOE, Reuters. Prices delayed.

Disclaimer: The information contained herein is derived from multiple sources believed to be reliable. However, this information is not guaranteed as to its accuracy or completeness. No responsibility is assumed for use of this material and no express or implied warranties or guarantees are made. This material and any view or comment expressed herein are provided for informational purposes only and should not be construed in any way as an inducement or recommendation to buy or sell products, commodity futures or options contracts.

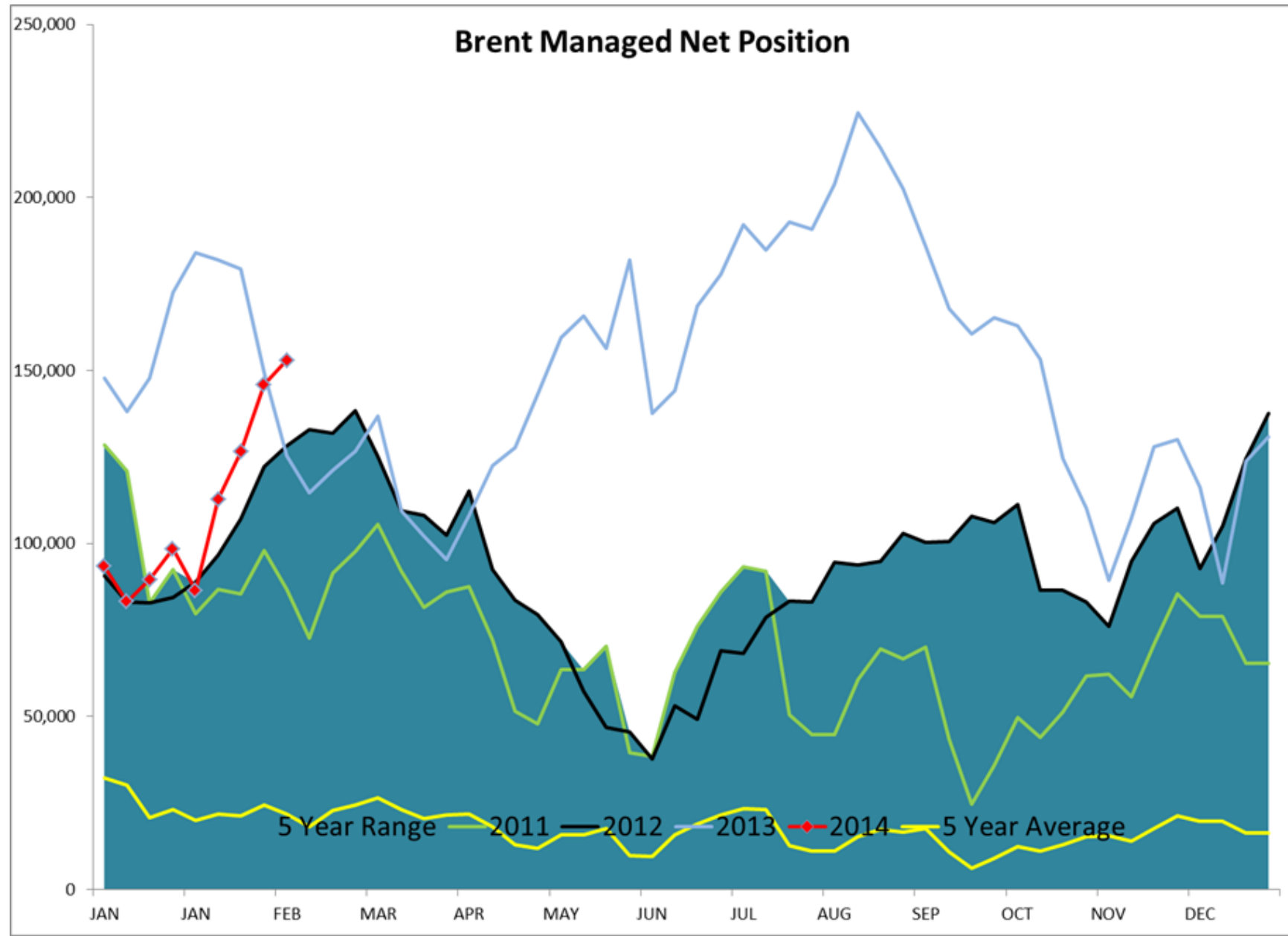
WTI NON-COMM NET POSITION



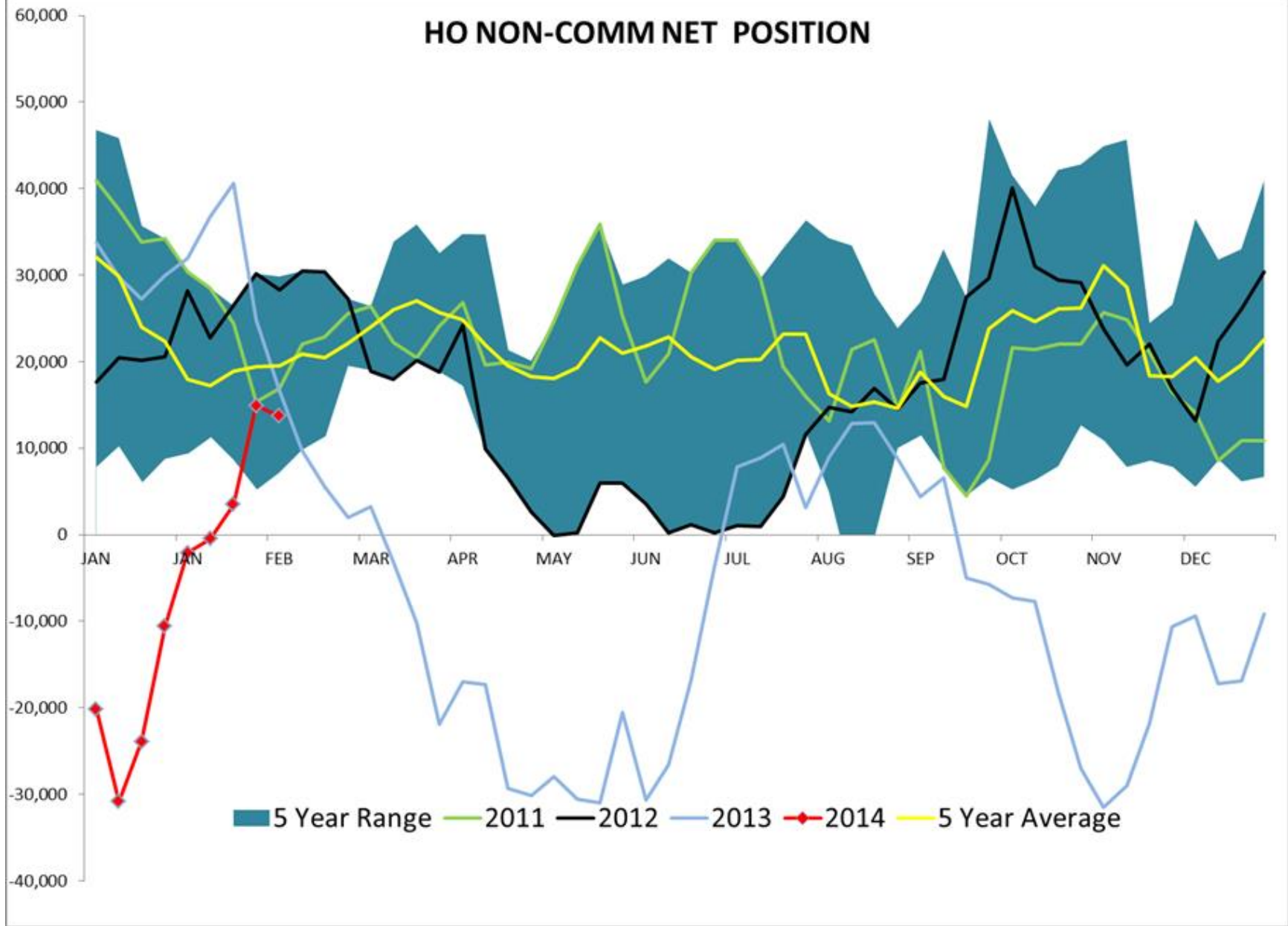
WTI MANAGED NET POSITION



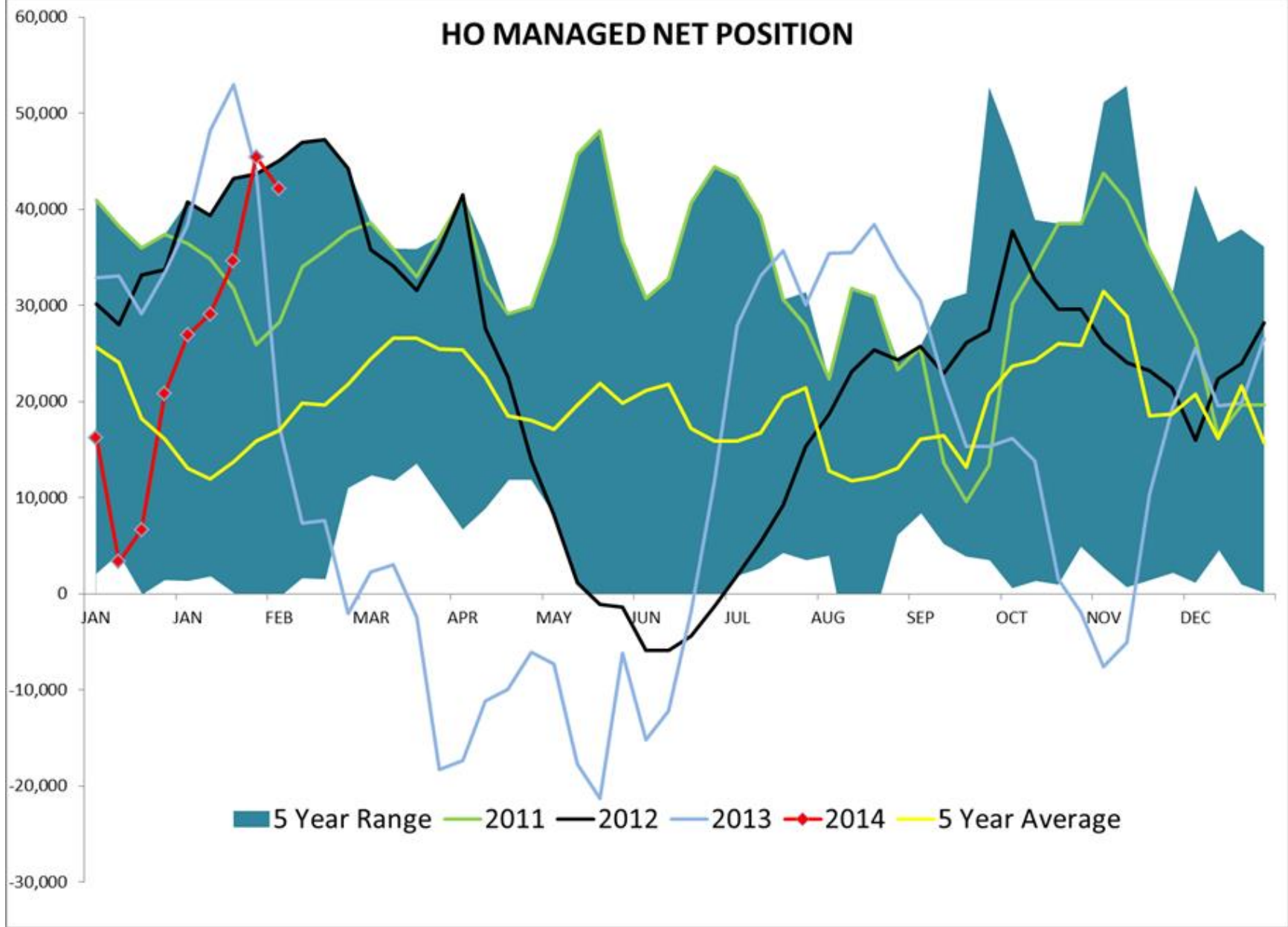
Brent Managed Net Position



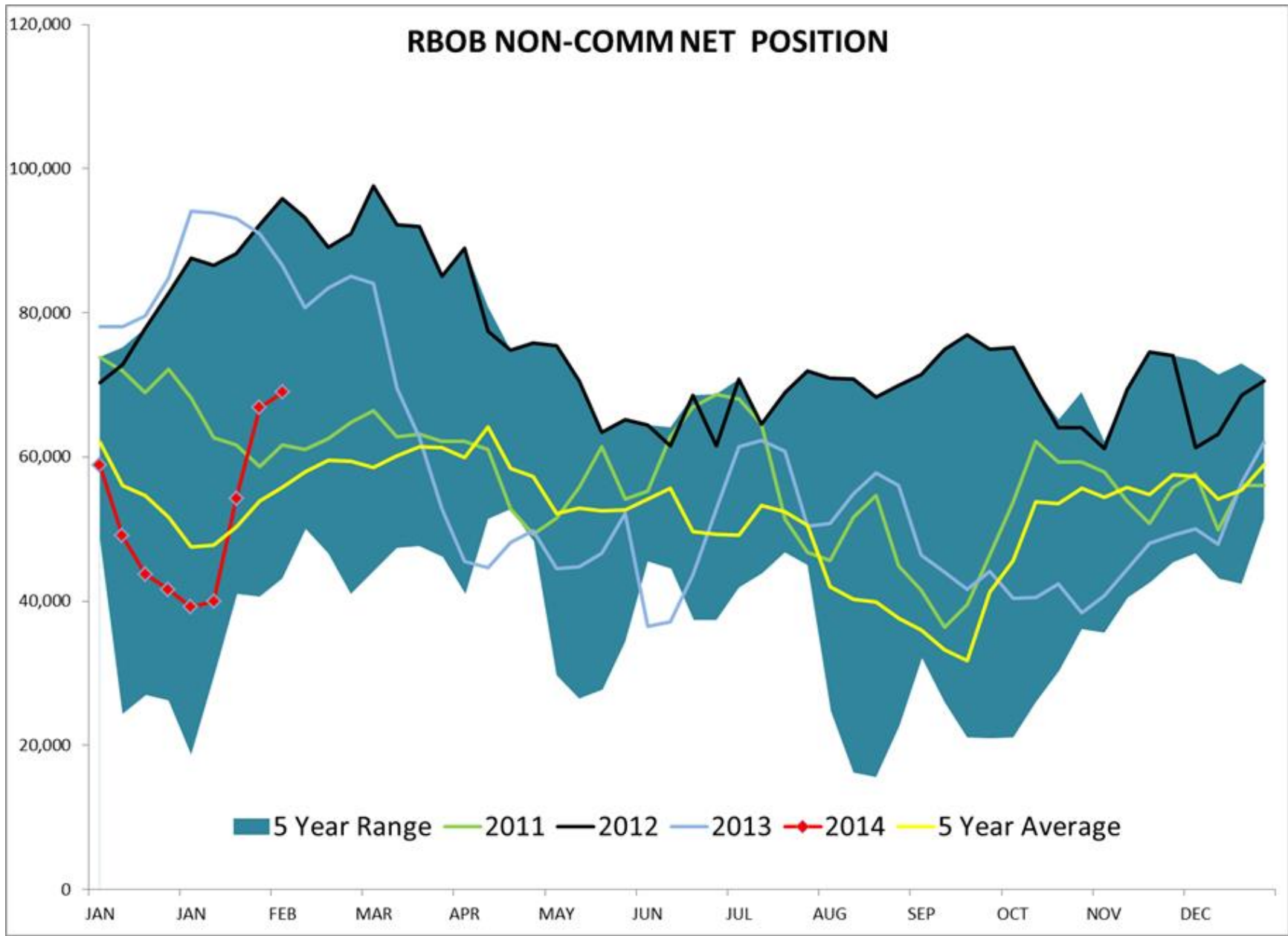
HO NON-COMM NET POSITION



HO MANAGED NET POSITION



RBOB NON-COMM NET POSITION



RBOB MANAGED NET POSITION

