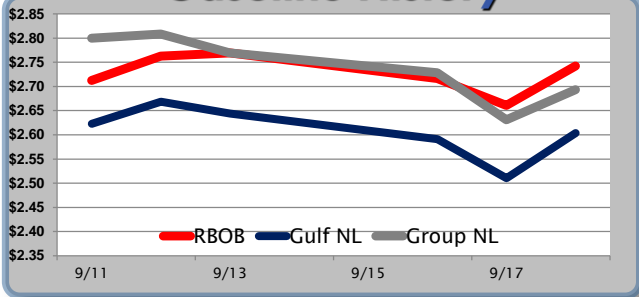


Gasoline

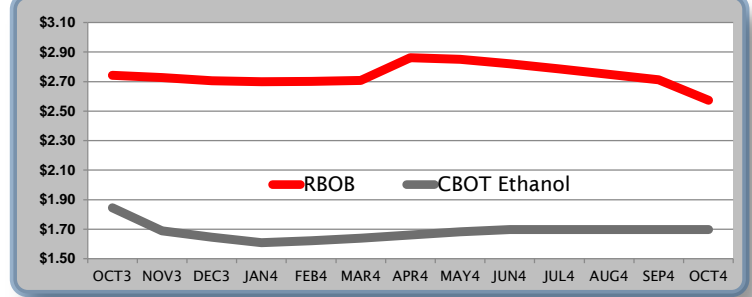
| | RBOB | Change | Gulf NL | Change | Group NL | Change | Gulf Basis | Group Basis |
|------|----------|-----------|----------|-----------|----------|-----------|--------------------|-------------|
| | | | | | | | (cents per gallon) | |
| 9/19 | \$2.7550 | \$0.0129 | \$2.6167 | \$0.0932 | \$2.7061 | \$0.0622 | -\$13.70 | -\$4.75 |
| 9/18 | \$2.7421 | \$0.0810 | \$2.6038 | \$0.0932 | \$2.6932 | \$0.0622 | -\$13.70 | -\$4.75 |
| 9/17 | \$2.6611 | -\$0.0555 | \$2.5106 | -\$0.0805 | \$2.6310 | -\$0.0975 | -\$14.35 | -\$2.20 |
| 9/16 | \$2.7166 | -\$0.0530 | \$2.5911 | -\$0.0532 | \$2.7285 | -\$0.0407 | -\$12.70 | \$0.95 |
| 9/13 | \$2.7696 | \$0.0069 | \$2.6443 | -\$0.0242 | \$2.7692 | -\$0.0392 | -\$11.55 | \$0.95 |
| 9/12 | \$2.7627 | \$0.0505 | \$2.6685 | \$0.0460 | \$2.8084 | \$0.0085 | -\$9.20 | \$4.80 |
| 9/11 | \$2.7122 | -\$0.0235 | \$2.6225 | \$0.0518 | \$2.7999 | -\$0.0358 | -\$9.30 | \$8.45 |

| RBOB Technicals | | Resistance | |
|-----------------|-----------|------------|------------|
| Indicator | Direction | | |
| MACD | Bearish | 2.8961 | 200 Day MA |
| Stochastics | Bottoming | 2.7923 | 14 Day MA |
| RSI | Bearish | 2.6443 | 2013 Low |
| ADX | Bearish | 2.5376 | 2012 Low |
| Momentum | Bearish | | Support |
| Bias: | Bearish | | |

Gasoline History



Gasoline Futures Fwd Curve

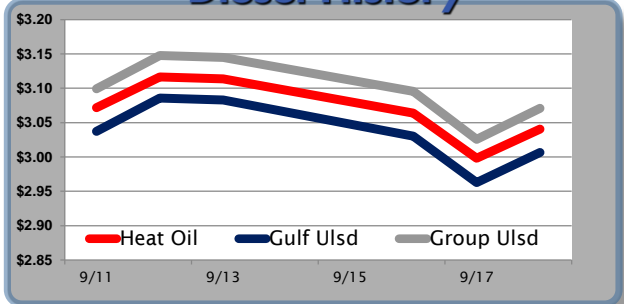


Diesel

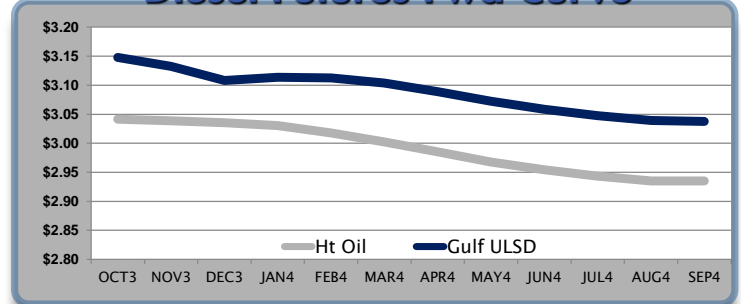
| | Heat Oil | Change | Gulf Ulstd | Change | Group Ulstd | Change | Gulf Basis | Group Basis |
|------|----------|-----------|------------|-----------|-------------|-----------|--------------------|-------------|
| | | | | | | | (cents per gallon) | |
| 9/19 | \$3.0510 | \$0.0105 | \$3.0170 | \$0.0437 | \$3.0815 | \$0.0452 | -\$3.40 | \$3.05 |
| 9/18 | \$3.0405 | \$0.0422 | \$3.0065 | \$0.0437 | \$3.0710 | \$0.0452 | -\$3.40 | \$3.05 |
| 9/17 | \$2.9983 | -\$0.0654 | \$2.9628 | -\$0.0674 | \$3.0258 | -\$0.0699 | -\$3.55 | \$2.85 |
| 9/16 | \$3.0637 | -\$0.0500 | \$3.0302 | -\$0.0525 | \$3.0957 | -\$0.0490 | -\$3.35 | \$3.10 |
| 9/13 | \$3.1137 | -\$0.0027 | \$3.0827 | -\$0.0032 | \$3.1447 | -\$0.0027 | -\$3.10 | \$3.20 |
| 9/12 | \$3.1164 | \$0.0446 | \$3.0859 | \$0.0486 | \$3.1474 | \$0.0481 | -\$3.05 | \$3.00 |
| 9/11 | \$3.0718 | \$0.0050 | \$3.0373 | \$0.0040 | \$3.0993 | \$0.0070 | -\$3.45 | \$2.85 |

| HO Technicals | | Resistance | |
|---------------|-----------|------------|------------|
| Indicator | Direction | | |
| MACD | Bearish | 3.2367 | 2013 High |
| Stochastics | Neutral | 3.0977 | 14 Day MA |
| RSI | Neutral | 2.9832 | 100 Day MA |
| ADX | Neutral | 2.9193 | Aug Low |
| Momentum | Bearish | | Support |
| Bias: | Neutral | | |

Diesel History



Diesel Futures Fwd Curve



Crude

| | WTI | Change | Brent | Change | Vs WTI | | | | Vs Brent | | | | Group / WCS |
|------|----------|---------|----------|---------|----------|-------------|--------|---------|----------|-------------|--------|--------|-------------|
| | | | | | Gulf Gas | Gulf Diesel | 3/2/1 | 5/3/2 | Gulf Gas | Gulf Diesel | 3/2/1 | 5/3/2 | 3/2/1 |
| 9/19 | \$108.56 | \$0.49 | \$110.55 | -\$0.05 | \$1.29 | \$18.20 | \$6.93 | \$8.05 | -\$1.24 | \$15.67 | \$4.40 | \$5.52 | 39.46 |
| 9/18 | \$108.07 | \$2.65 | \$110.60 | \$2.41 | \$0.03 | \$19.02 | \$6.36 | \$7.62 | -\$2.74 | \$16.25 | \$3.59 | \$4.85 | 37.24 |
| 9/17 | \$105.42 | -\$1.17 | \$108.19 | -\$1.88 | \$2.24 | \$20.68 | \$8.38 | \$9.61 | -\$1.24 | \$17.20 | \$4.90 | \$6.13 | 43.25 |
| 9/16 | \$106.59 | -\$1.62 | \$110.07 | -\$2.71 | \$2.85 | \$21.26 | \$8.99 | \$10.22 | -\$1.72 | \$16.69 | \$4.42 | \$5.65 | 46.75 |
| 9/13 | \$108.21 | -\$0.39 | \$112.78 | \$0.15 | | | | | | | | | |

Refinery Margins

Economic Indicators

Commodity Futures

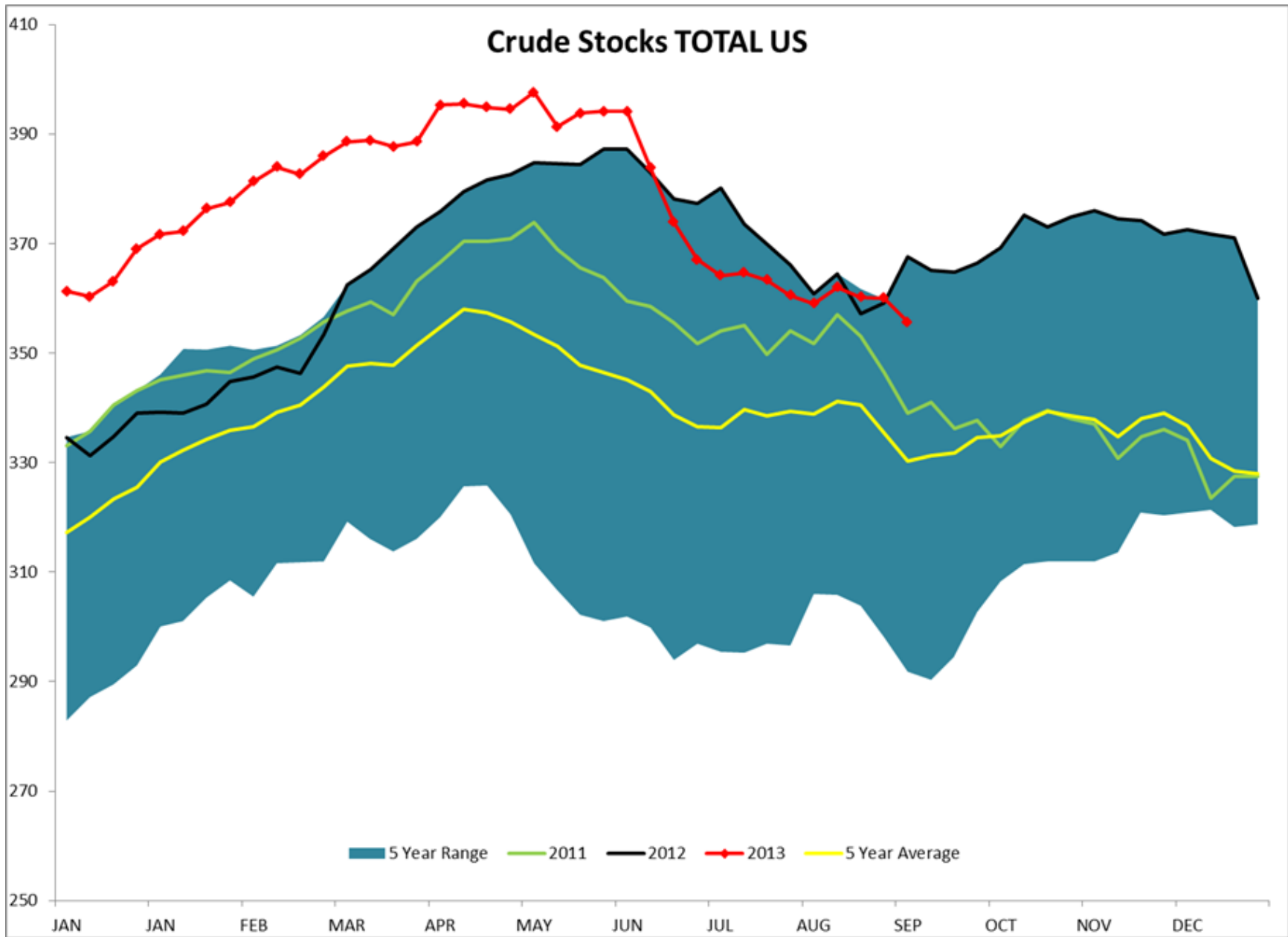
| | Settle | Change | | Settle | Change |
|----------------------------|--------|--------|---------|--------|--------|
| S&P 500 | 1,726 | 20.76 | Ethanol | 1.845 | 0.059 |
| DJIA | 15,677 | 147.21 | NatGas | 3.741 | 0.03 |
| Nasdaq | 3,784 | 37.94 | Gold | 1,370 | 61.90 |
| EUR/USD | 1.3546 | 0.0025 | Silver | 23 | 1.76 |
| USD Index | 80.23 | -0.01 | Copper | 3.35 | 0.07 |
| US Treasury 10 Year Yld | 2.70% | 0.01 | FCOJ | 126.70 | -0.85 |
| Spanish 10 Year Yld | 4.34% | 0.01 | Corn | 459.00 | 2.75 |
| S&P Volatility Index (VIX) | 13.59 | -0.94 | Soy | 1,358 | 10.00 |
| Baltic Dry Freight Index | 1,822 | 82.00 | Wheat | 655.25 | 8.75 |

Gulf Coast ULSD Fwd Price Indication

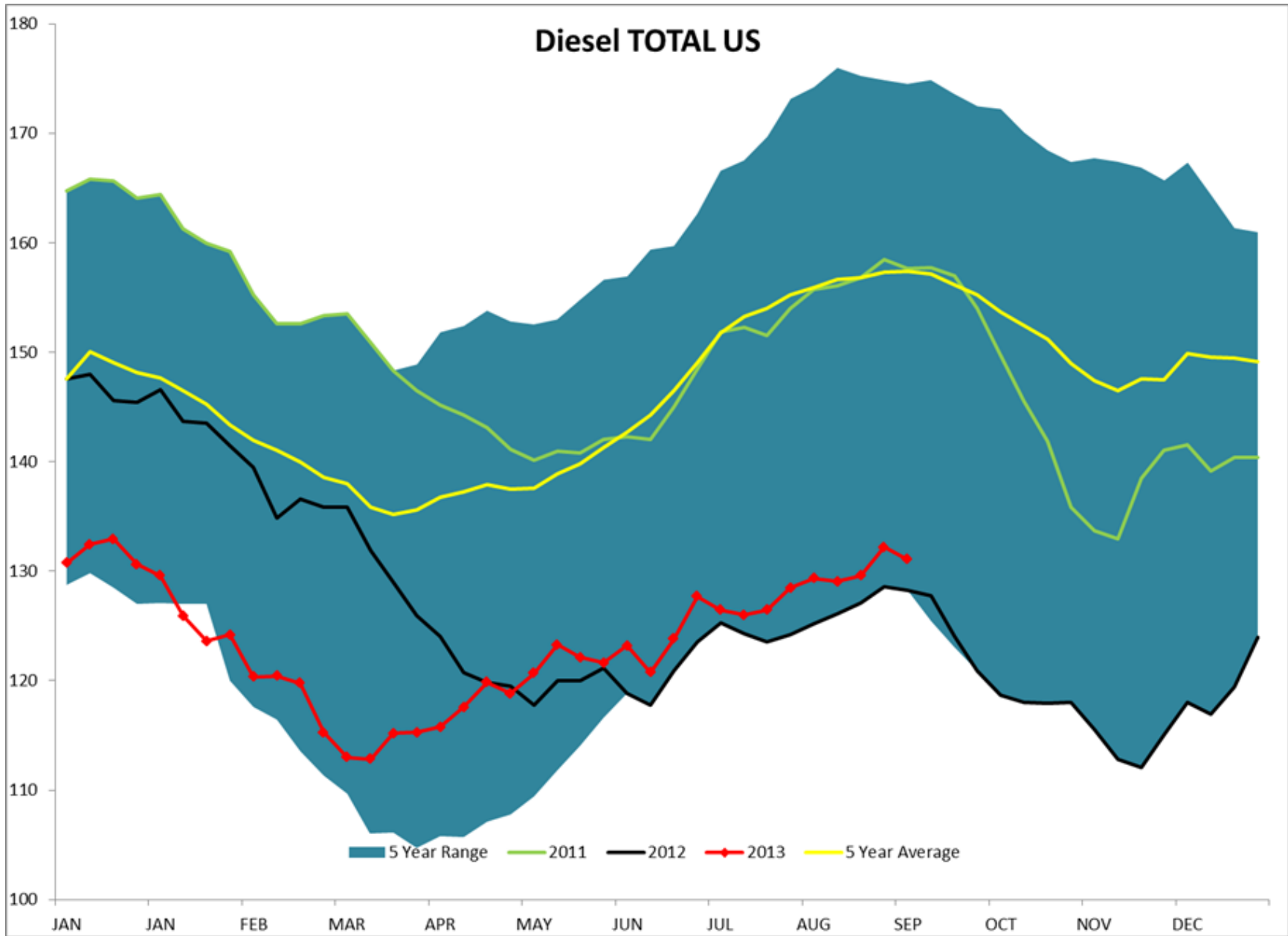
Indicative forward prices for ULSD at Gulf Coast area terminals. Prices are estimates only.

| Del. Month | Price | Differential | 3 Mo. Avg. | 6 Mo. Avg |
|--------------|----------|--------------|------------|-----------|
| OCT3 | \$3.1481 | \$0.1066 | | |
| NOV3 | \$3.1325 | \$0.0939 | | |
| DEC3 | \$3.1082 | \$0.0726 | \$3.1296 | |
| JAN4 | \$3.1139 | \$0.0833 | | |
| FEB4 | \$3.1126 | \$0.0951 | | |
| MAR4 | \$3.1039 | \$0.1015 | \$3.1101 | \$3.1199 |
| APR4 | \$3.0889 | \$0.1039 | | |
| MAY4 | \$3.0722 | \$0.1048 | | |
| JUN4 | \$3.0586 | \$0.1040 | \$3.0732 | |
| JUL4 | \$3.0475 | \$0.1039 | | |
| AUG4 | \$3.0394 | \$0.1042 | | |
| SEP4 | \$3.0374 | \$0.1041 | \$3.0414 | \$3.0573 |
| 12 Month Avg | \$3.0886 | \$0.0982 | | |

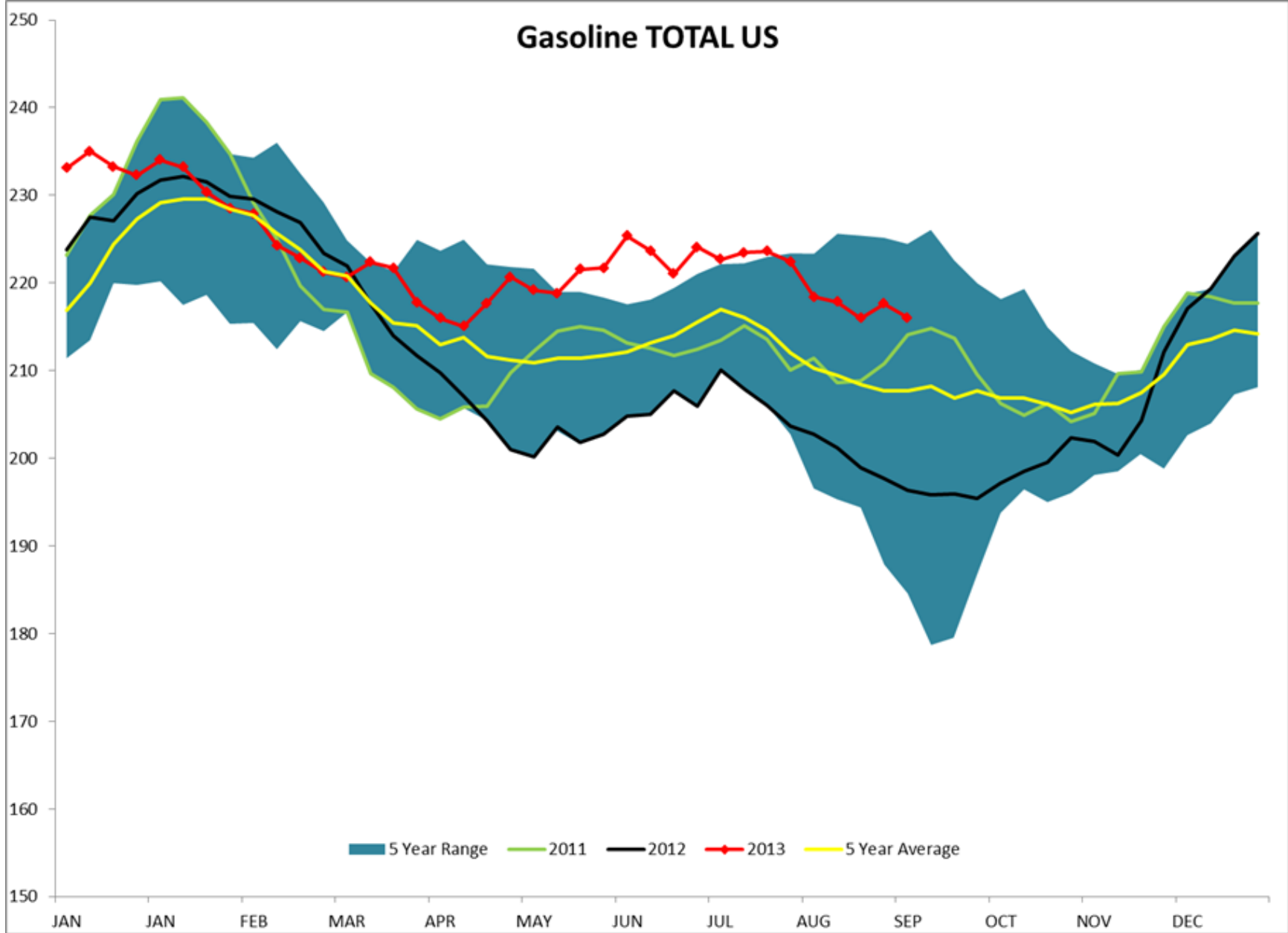
*SOURCES: Nymex, CBOT, NYSE, ICE, NASDAQ, CME Group, CBOE, Reuters. Prices delayed.
 Disclaimer: The information contained herein is derived from multiple sources believed to be reliable. However, this information is not guaranteed as to its accuracy or completeness. No responsibility is assumed for use of this material and no express or implied warranties or guarantees are made. This material and any view or comment expressed herein are provided for informational purposes only and should not be construed in any way as an inducement or recommendation to buy or sell products, commodity futures or options contracts.



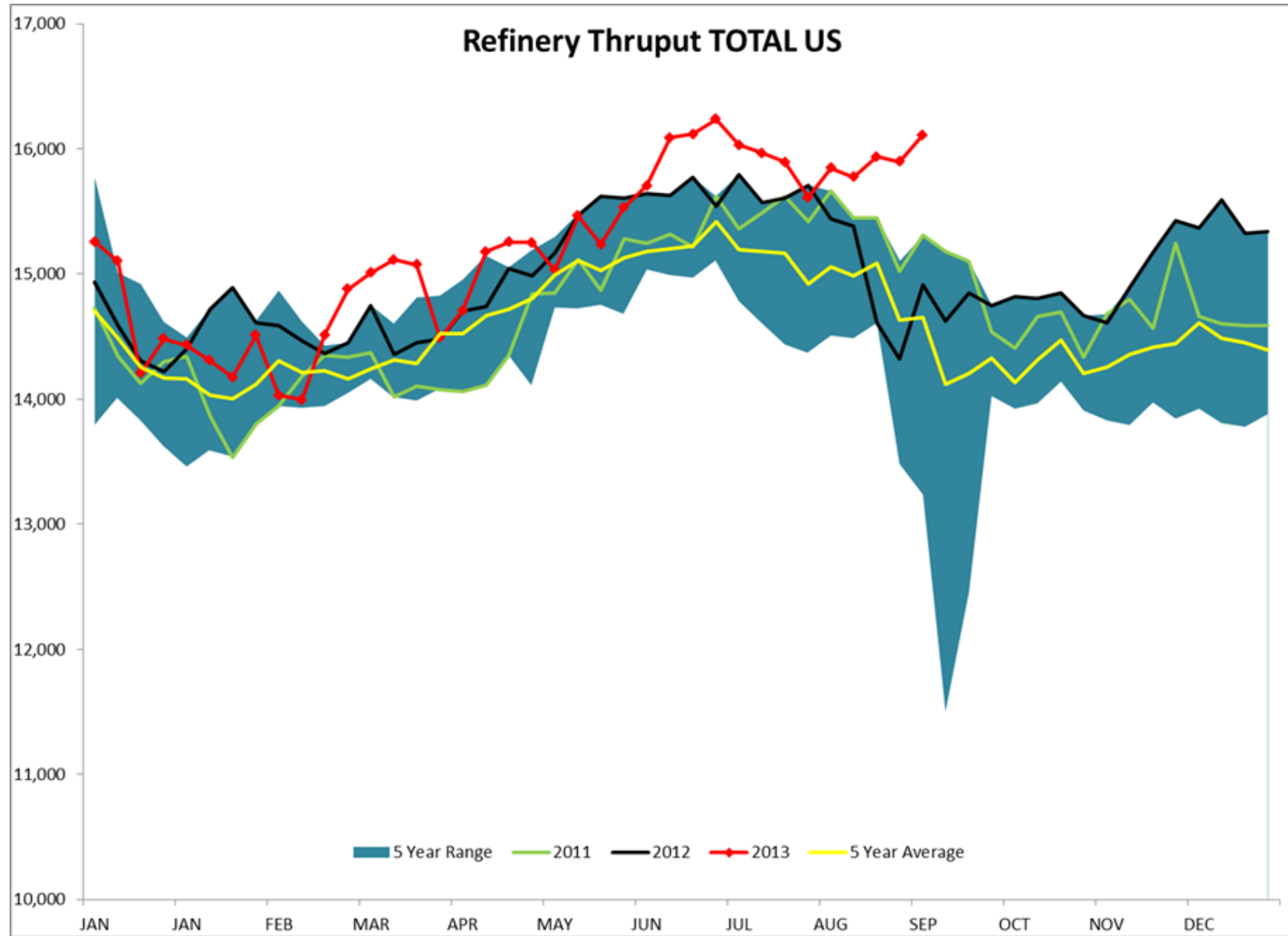
Diesel TOTAL US

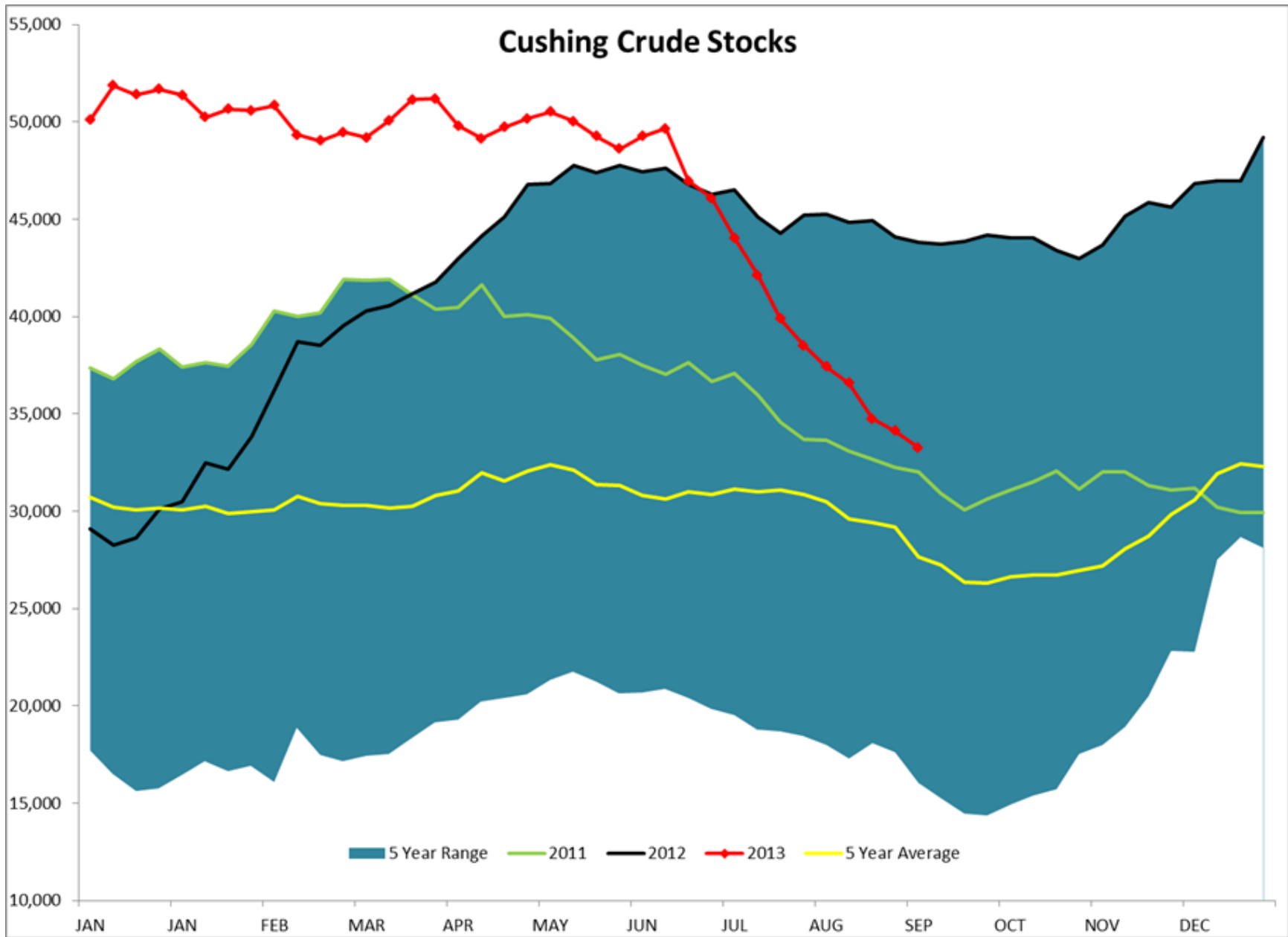


Gasoline TOTAL US

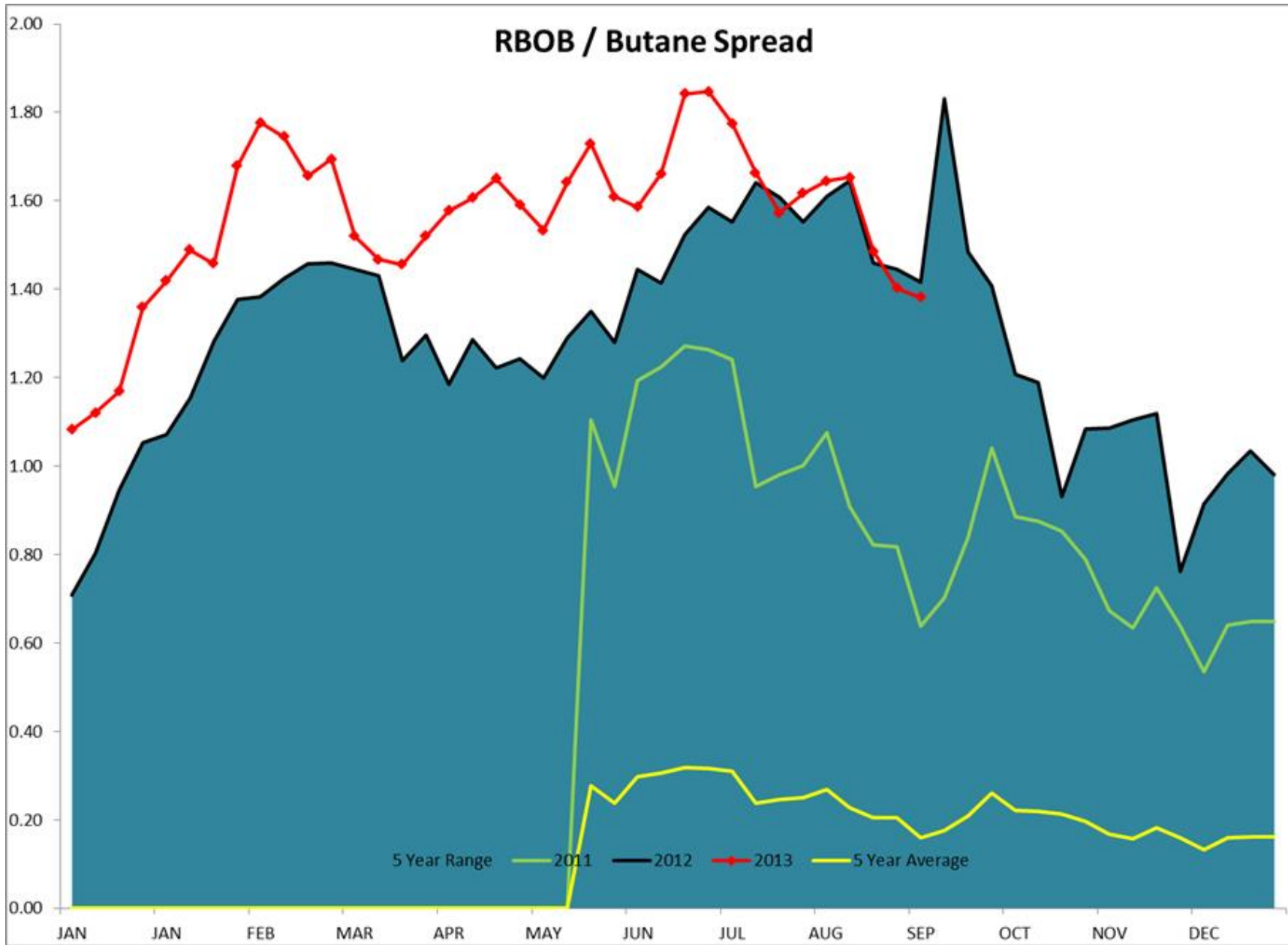


Refinery Thruput TOTAL US





RBOB / Butane Spread



Ethanol RINs Yr 2

