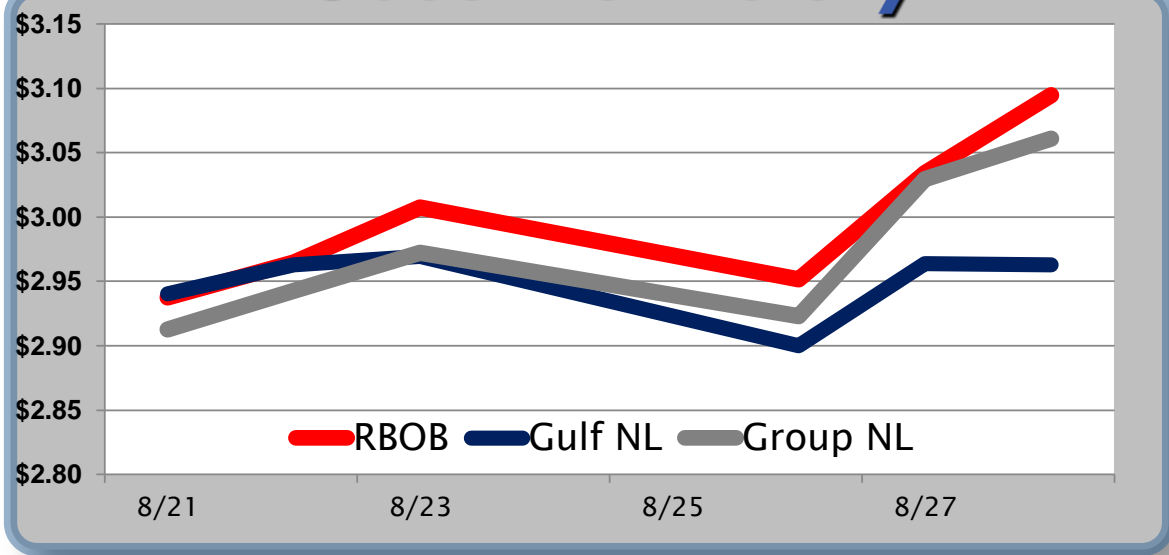


Gasoline

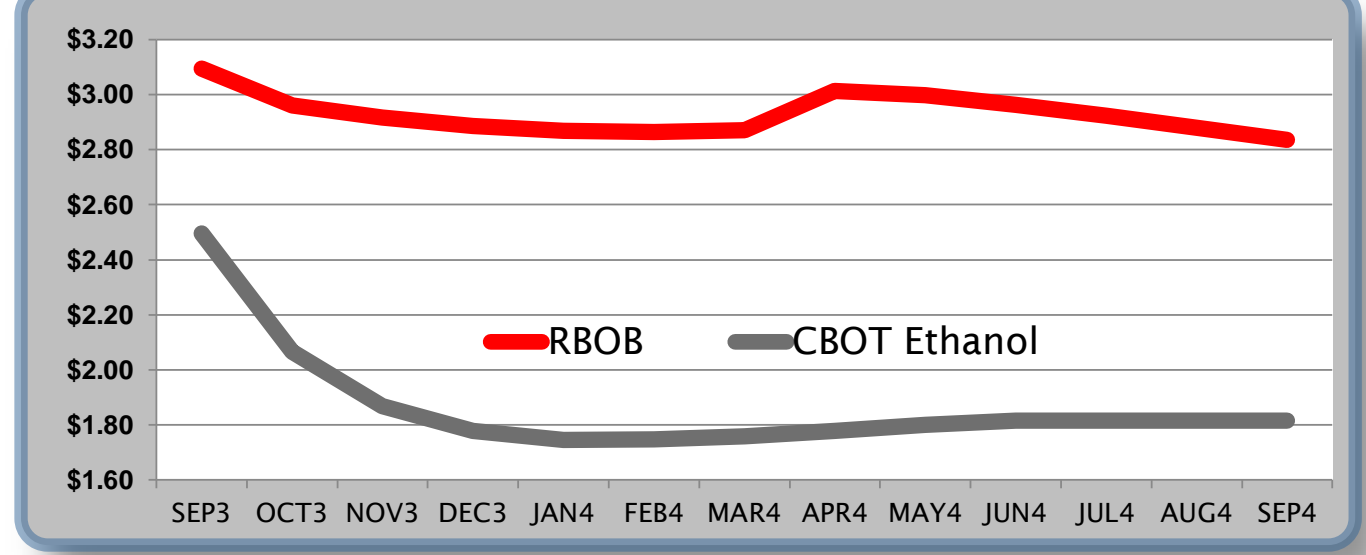
	RBOB	Change	Gulf NL	Change	Group NL	Change	Gulf Basis	Group Basis
8/29	\$3.0798	-\$0.0147	\$2.9483		\$3.0464			
8/28	\$3.0945	\$0.0604	\$2.9630	-\$0.0008	\$3.0611	\$0.0315	-\$12.32	-\$2.50
8/27	\$3.0341	\$0.0824	\$2.9638	\$0.0638	\$3.0296	\$0.1065	-\$7.39	-\$0.70
8/26	\$2.9517	-\$0.0555	\$2.9000	-\$0.0692	\$2.9231	-\$0.0490	-\$5.02	-\$2.80
8/23	\$3.0072	\$0.0424	\$2.9692	\$0.0062	\$2.9721	\$0.0292	-\$3.85	-\$3.55
8/22	\$2.9648	\$0.0271	\$2.9630	\$0.0227	\$2.9429	\$0.0302	-\$0.70	-\$2.70
8/21	\$2.9377	\$0.0105	\$2.9403	\$0.0056	\$2.9127	\$0.0005	-\$0.05	-\$2.80

RBOB Technicals			Resistance	
Indicator	Direction			
MACD	Neutral	3.2672	2013 High	
Stochastics	Topping	3.1632	July High	
RSI	Neutral	2.9793	14 Day MA	
ADX	Bullish	2.9518	50 Day MA	
Momentum	Neutral		Support	
Bias:	Bullish			

Gasoline History



Gasoline Futures Fwd Curve

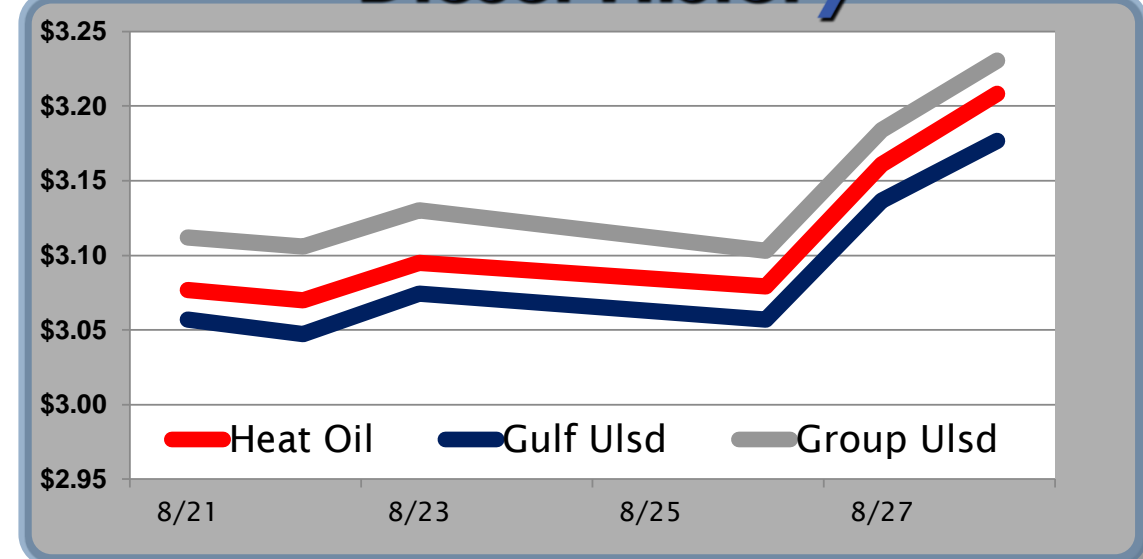


Diesel

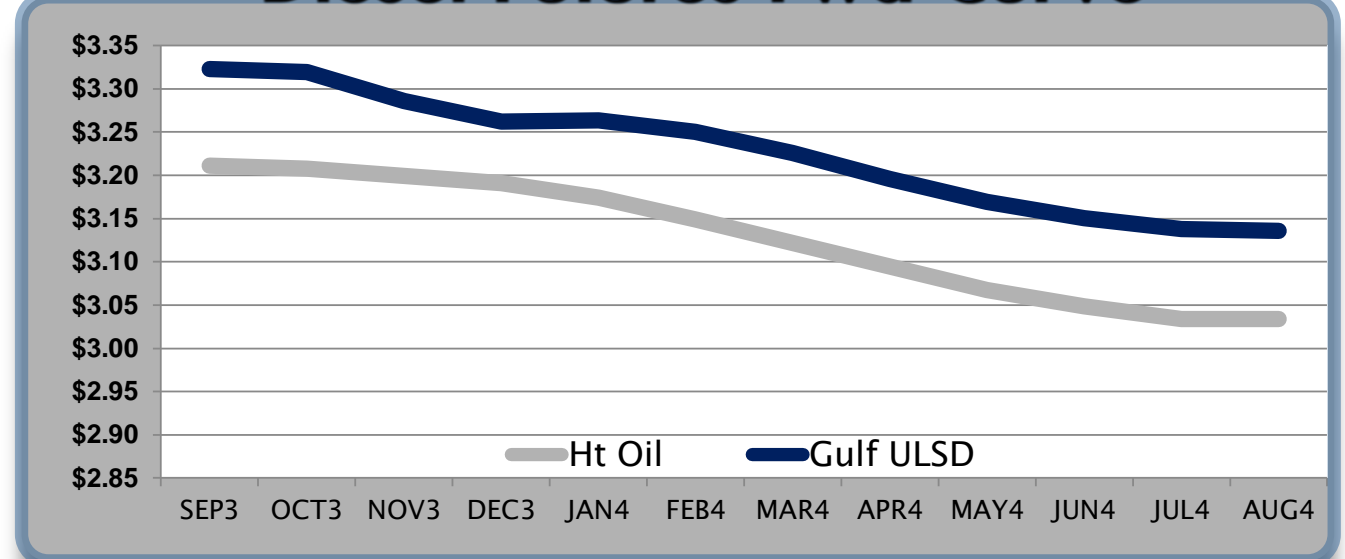
	Heat Oil	Change	Gulf Ulstd	Change	Group Ulstd	Change	Gulf Basis	Group Basis
8/29	\$3.2024	-\$0.0059	\$3.1708		\$3.2244			
8/28	\$3.2083	\$0.0474	\$3.1767	\$0.0402	\$3.2303	\$0.0464	-\$3.16	\$2.20
8/27	\$3.1609	\$0.0819	\$3.1365	\$0.0797	\$3.1839	\$0.0809	-\$2.44	\$2.40
8/26	\$3.0790	-\$0.0160	\$3.0568	-\$0.0175	\$3.1030	-\$0.0270	-\$2.22	\$2.30
8/23	\$3.0950	\$0.0251	\$3.0743	\$0.0269	\$3.1300	\$0.0241	-\$2.07	\$3.60
8/22	\$3.0699	-\$0.0069	\$3.0474	-\$0.0094	\$3.1059	-\$0.0059	-\$2.25	\$3.50
8/21	\$3.0768	-\$0.0016	\$3.0568	\$0.0009	\$3.1118	-\$0.0011	-\$2.00	\$3.60

HO Technicals			Resistance	
Indicator	Direction			
MACD	Bullish	3.2367	2013 High	
Stochastics	Bullish	3.216	Aug High	
RSI	Overbought	3.0938	14 Day MA	
ADX	Bullish	3.062	Bollinger	
Momentum	Topping		Support	
Bias:	Bullish			

Diesel History



Diesel Futures Fwd Curve



Crude

	WTI	Change	Brent	Change	Vs WTI				Vs Brent				Group / WCS
					Gulf Gas	Gulf Diesel	3/2/1	5/3/2	Gulf Gas	Gulf Diesel	3/2/1	5/3/2	3/2/1
8/29	\$109.23	-\$0.87	\$116.15	-\$0.46	\$14.35	\$23.32	\$17.34	\$17.94	\$7.84	\$16.81	\$10.83	\$11.43	52.00
8/28	\$110.10	\$1.09	\$116.61	\$2.25	\$15.47	\$22.72	\$17.89	\$18.37	\$10.12	\$17.37	\$12.54	\$13.02	50.61
8/27	\$109.01	\$3.09	\$114.36	\$3.63	\$15.88	\$22.47	\$18.08	\$18.51	\$11.07	\$17.66	\$13.27	\$13.70	48.80
8/26	\$105.92	-\$0.50	\$110.73	-\$0.31	\$18.29	\$22.70	\$19.76	\$20.05	\$13.67	\$18.08	\$15.14	\$15.43	52.23
8/23	\$106.42	\$1.39	\$111.04	\$1.14									

Refinery Margins

Economic Indicators

Commodity Futures

	Settle	Change		Settle	Change
S&P 500	1,635	4.48	Ethanol	2.496	0.023
DJIA	14,825	48.38	NatGas	3.574	-0.01
Nasdaq	3,593	14.83	Gold	1,409	-9.60
EUR/USD	1.3242	-0.0096	Silver	24	-0.21
USD Index	81.97	0.54	Copper	3.29	-0.02
US Treasury 10 Year Yld	2.81%	0.05	FCOJ	136.65	1.50
Spanish 10 Year Yld	4.53%	0.04	Corn	499.50	-4.75
S&P Volatility Index (VIX)	16.49	-0.28	Soy	1,428	-5.25
Baltic Dry Freight Index	1,146	-23.00	Wheat	643.00	-3.50

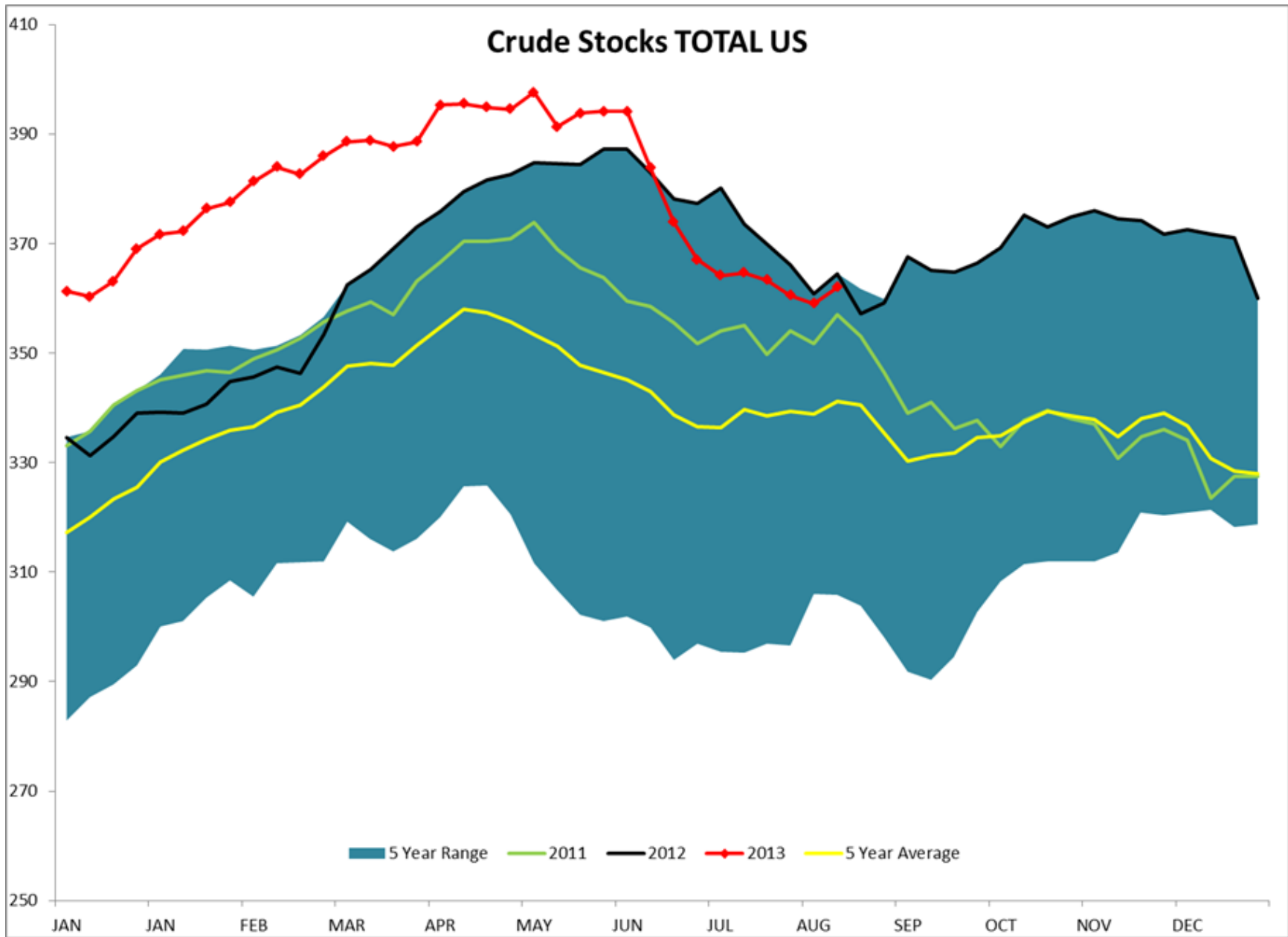
Gulf Coast ULSD Fwd Price Indication

Indicative forward prices for ULSD at Gulf Coast area terminals. Prices are estimates only.

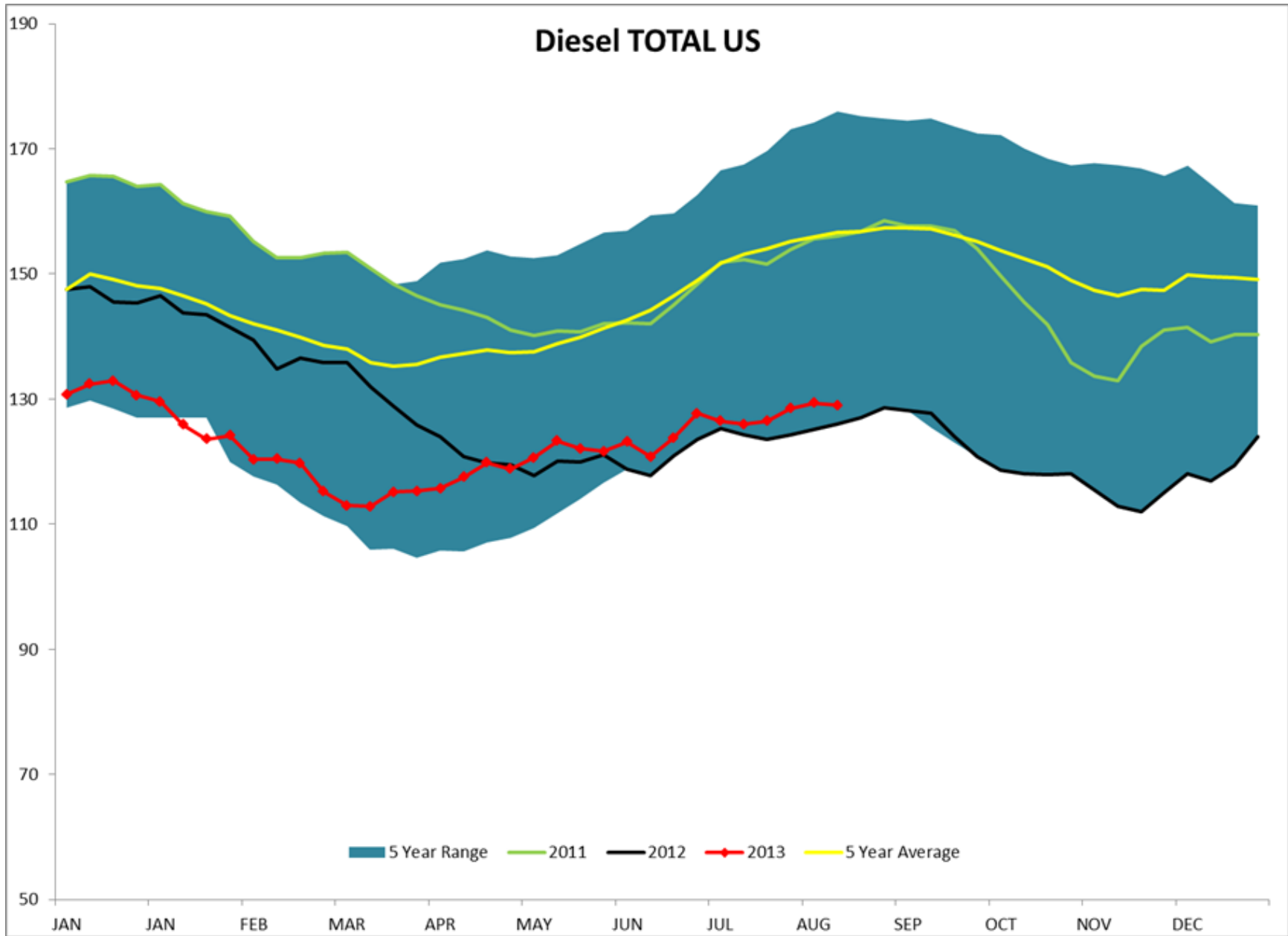
Del. Month	Price	Differential	3 Mo. Avg.	6 Mo. Avg
SEP3	\$3.3233	\$0.1120		
OCT3	\$3.3192	\$0.1114		
NOV3	\$3.2858	\$0.0866	\$3.3094	
DEC3	\$3.2625	\$0.0715		
JAN4	\$3.2636	\$0.0894		
FEB4	\$3.2503	\$0.1011	\$3.2588	\$3.2841
MAR4	\$3.2260	\$0.1042		
APR4	\$3.1958	\$0.1013		
MAY4	\$3.1696	\$0.1025	\$3.1971	
JUN4	\$3.1503	\$0.1014		
JUL4	\$3.1377	\$0.1038		
AUG4	\$3.1357	\$0.1040	\$3.1412	\$3.1692
12 Month Avg	\$3.2267	\$0.0991		

*SOURCES: Nymex, CBOT, NYSE, ICE, NASDAQ, CME Group, CBOE, Reuters. Prices delayed.

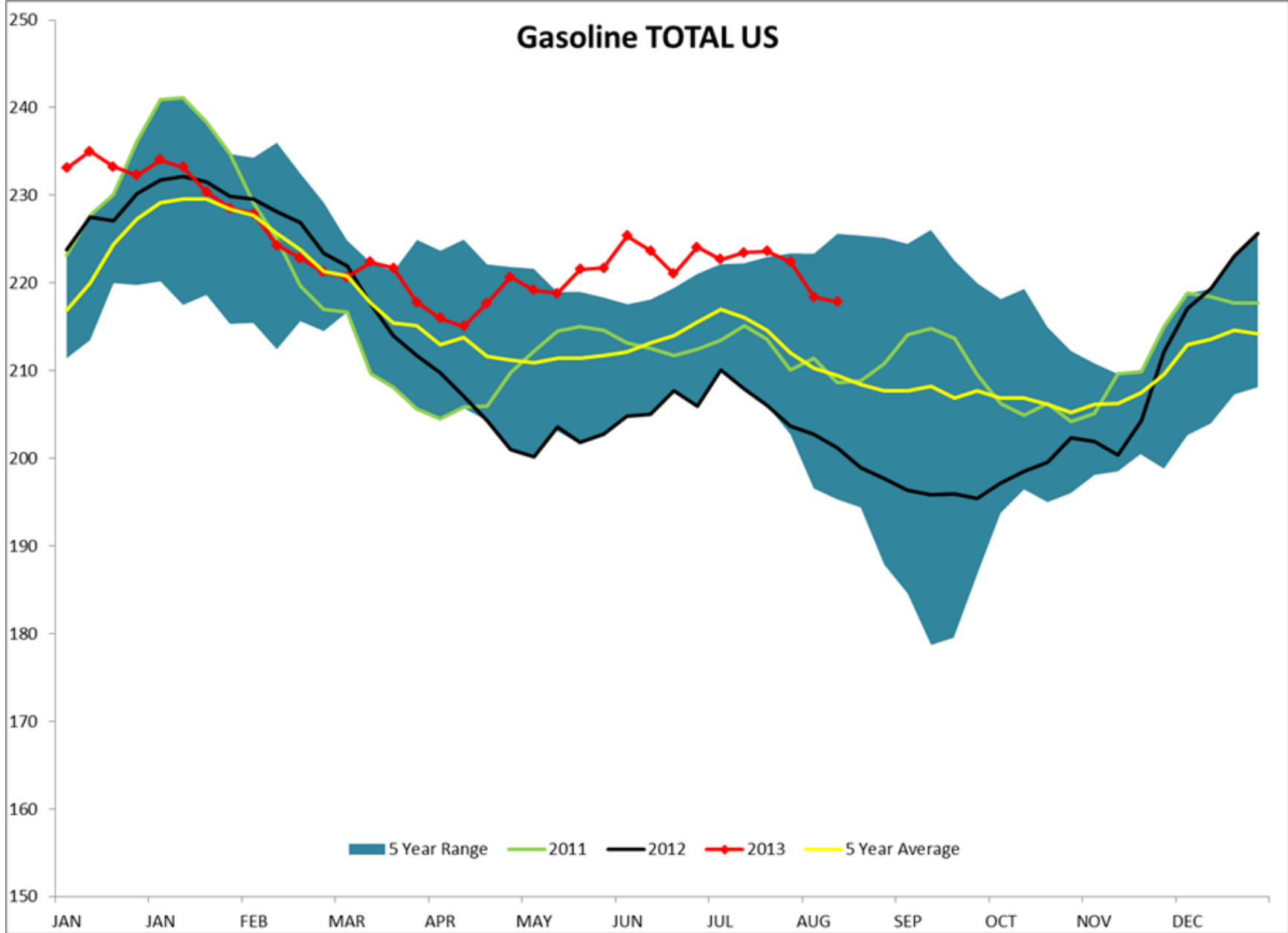
Disclaimer: The information contained herein is derived from multiple sources believed to be reliable. However, this information is not guaranteed as to its accuracy or completeness. No responsibility is assumed for use of this material and no express or implied warranties or guarantees are made. This material and any view or comment expressed herein are provided for informational purposes only and should not be construed in any way as an inducement or recommendation to buy or sell products, commodity futures or options contracts.



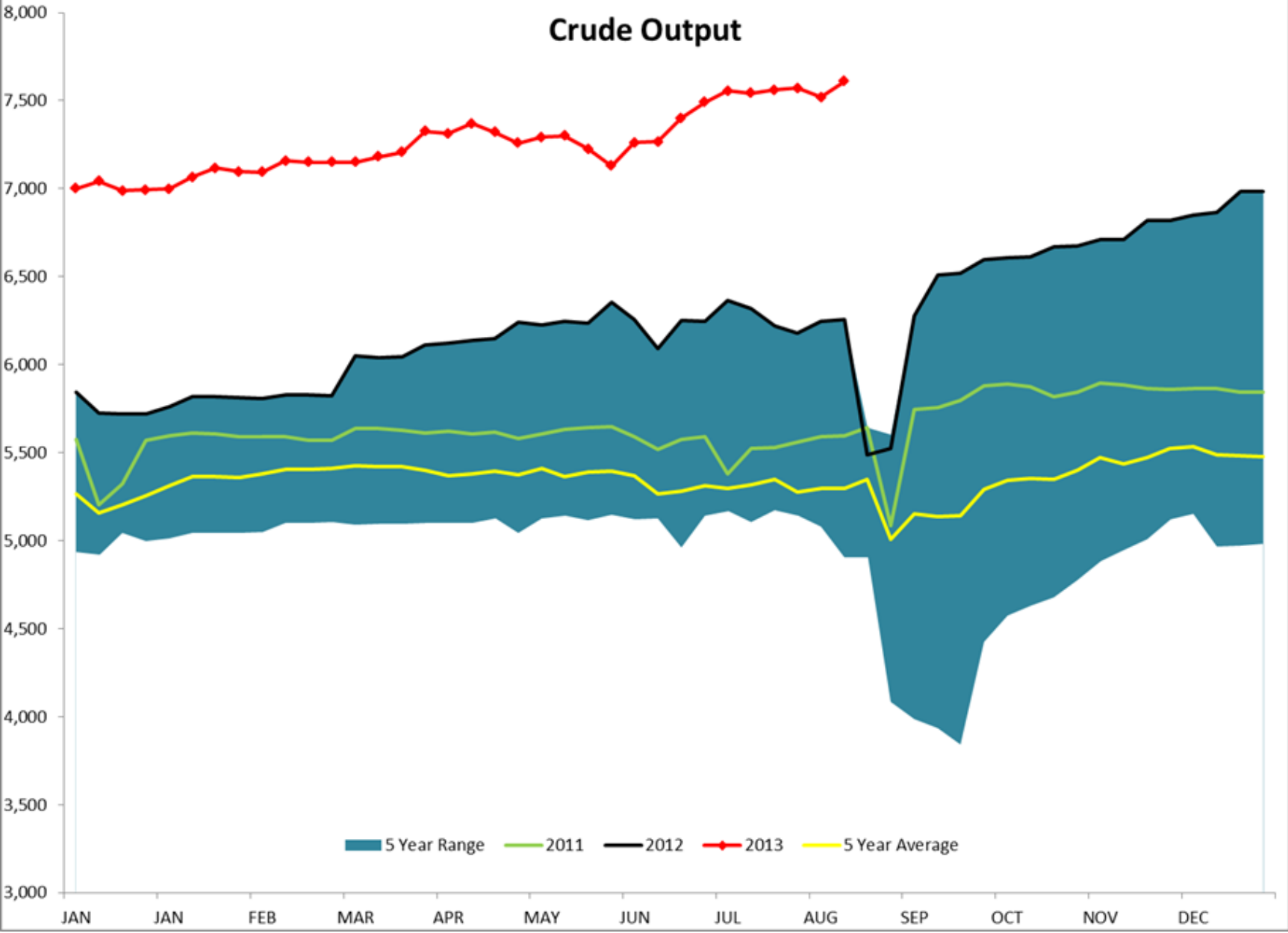
Diesel TOTAL US



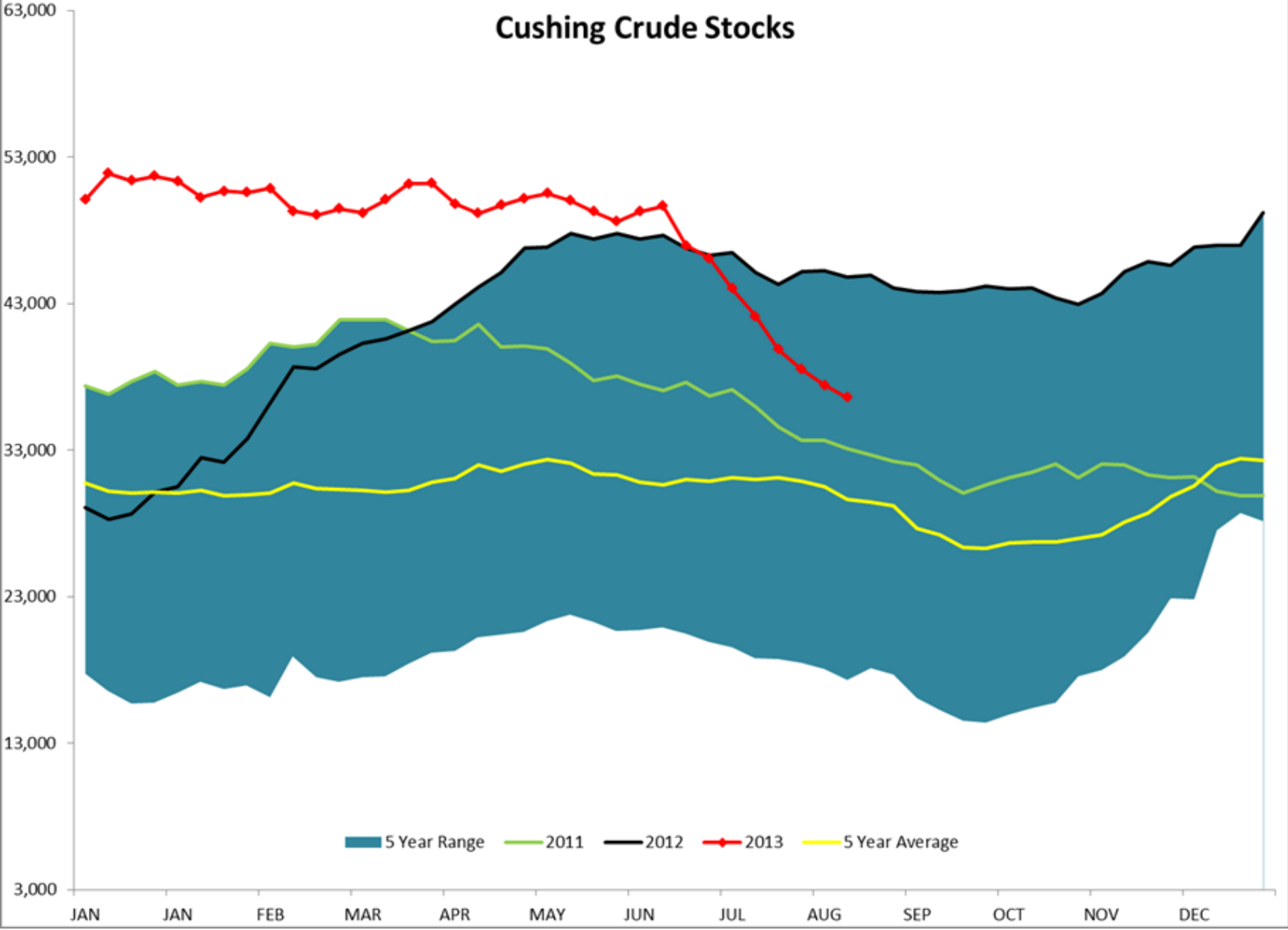
Gasoline TOTAL US



Crude Output



Cushing Crude Stocks



Refinery Thruput TOTAL US

