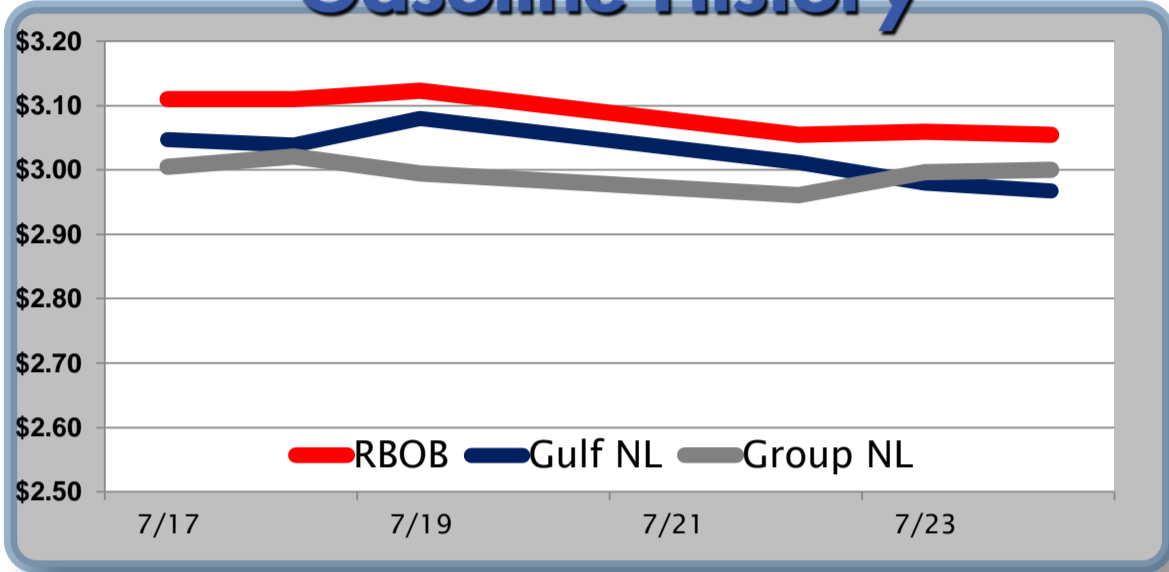


Gasoline

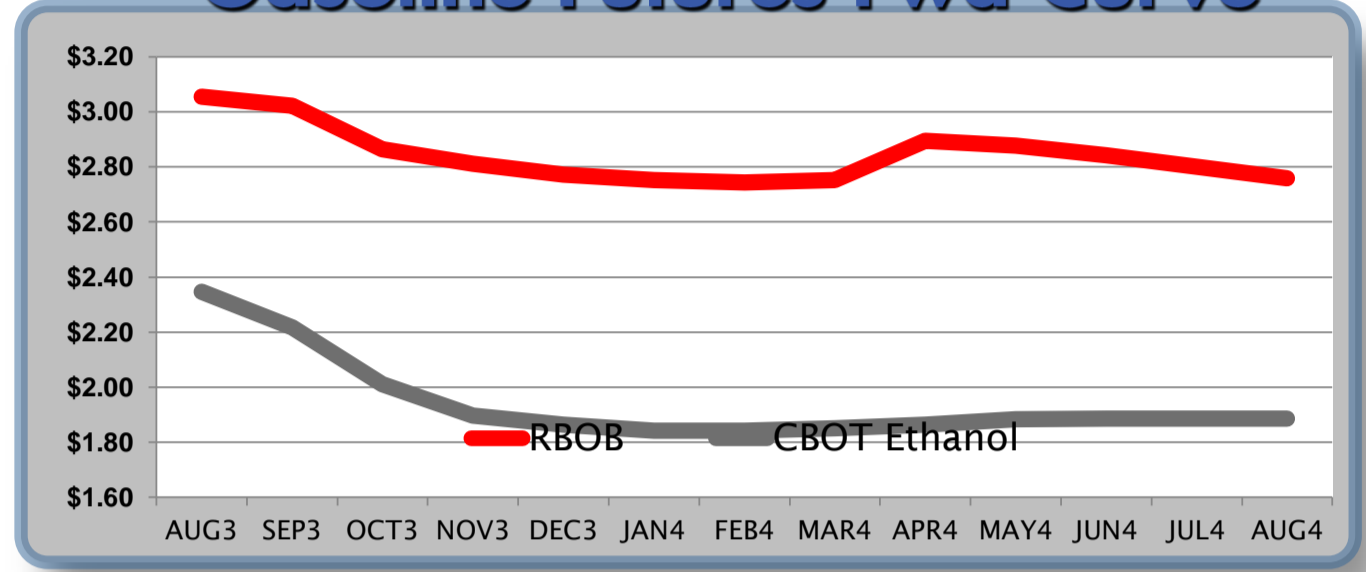
	RBOB	Change	Gulf NL	Change	Group NL	Change	Gulf Basis	Group Basis
							(cents per gallon)	
7/25	\$3.0187	-\$0.0361	\$2.9315		\$2.9639			
7/24	\$3.0548	-\$0.0043	\$2.9676	-\$0.0117	\$3.0000	\$0.0033	-\$8.75	-\$5.50
7/23	\$3.0591	\$0.0040	\$2.9793	-\$0.0320	\$2.9967	\$0.0355	-\$8.80	-\$6.95
7/22	\$3.0551	-\$0.0683	\$3.0113	-\$0.0683	\$2.9612	-\$0.0333	-\$4.95	-\$10.05
7/19	\$3.1234	\$0.0136	\$3.0796	\$0.0412	\$2.9945	-\$0.0263	-\$5.05	-\$13.55
7/18	\$3.1098	-\$0.0003	\$3.0384	-\$0.0091	\$3.0208	\$0.0159	-\$7.95	-\$9.70
7/17	\$3.1101	-\$0.0242	\$3.0475	-\$0.0543	\$3.0049	-\$0.0294	-\$6.05	-\$10.30

RBOB Technicals			Resistance	
Indicator	Direction			
MACD	Bullish	3.2672	2013 High	
Stochastics	Topping	3.1632	July High	
RSI	Bullish	2.9781	38% Retracement	
ADX	Neutral	2.9140	100 Day MA	
Momentum	Topping			
Bias:	Bullish			
			Support	

Gasoline History



Gasoline Futures Fwd Curve

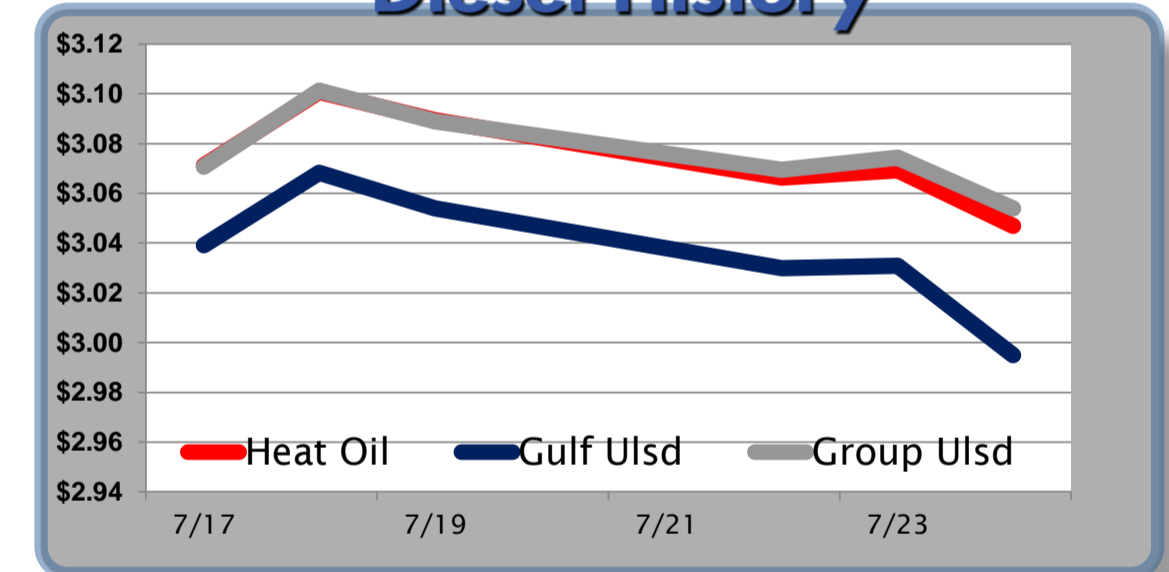


Diesel

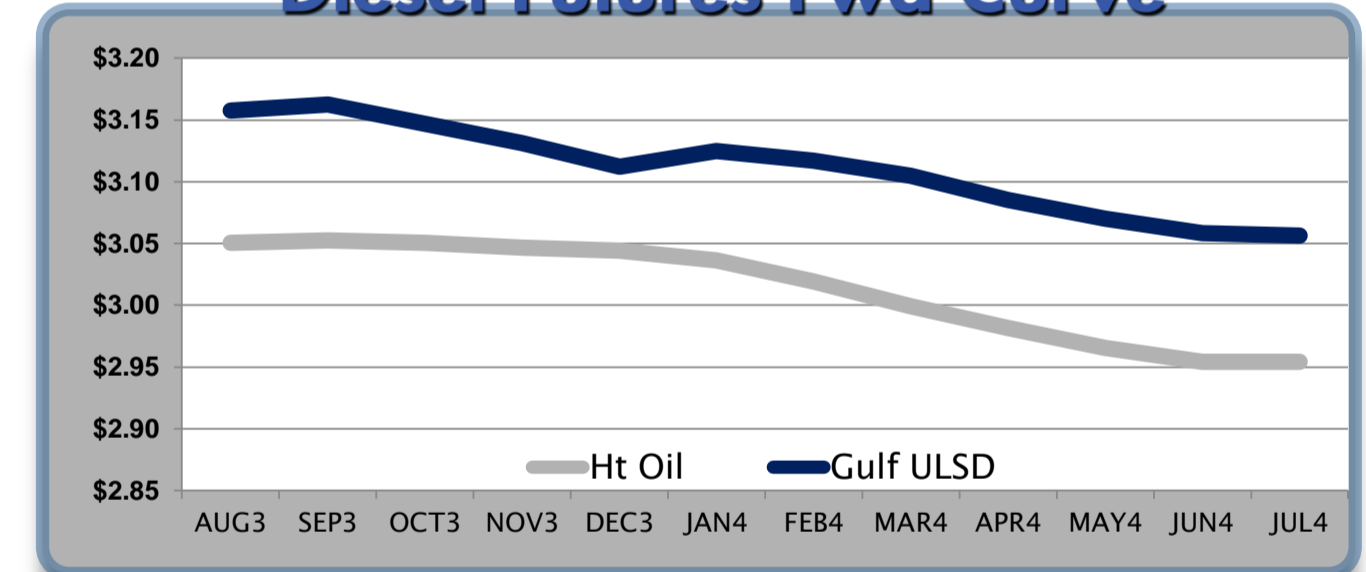
	Heat Oil	Change	Gulf Ulstd	Change	Group Ulstd	Change	Gulf Basis	Group Basis
							(cents per gallon)	
7/25	\$3.0242	-\$0.0228	\$2.9722		\$3.0312			
7/24	\$3.0470	-\$0.0223	\$2.9950	-\$0.0358	\$3.0540	-\$0.0203	-\$5.20	\$0.70
7/23	\$3.0693	\$0.0029	\$3.0308	\$0.0009	\$3.0743	\$0.0049	-\$3.85	\$0.60
7/22	\$3.0664	-\$0.0230	\$3.0299	-\$0.0240	\$3.0694	-\$0.0195	-\$3.65	\$0.20
7/19	\$3.0894	-\$0.0113	\$3.0539	-\$0.0143	\$3.0889	-\$0.0123	-\$3.55	\$0.05
7/18	\$3.1007	\$0.0295	\$3.0682	\$0.0290	\$3.1012	\$0.0305	-\$3.25	-\$0.05
7/17	\$3.0712	\$0.0243	\$3.0392	\$0.0223	\$3.0707	\$0.0198	-\$3.20	\$0.05

HO Technicals			Resistance	
Indicator	Direction			
MACD	Bullish	3.1044	April High	
Stochastics	Bearish	3.1325	June High	
RSI	Topping	2.9176	100 Day MA	
ADX	Bullish	2.764	June Low	
Momentum	Topping			
Bias:	Bullish			
			Support	

Diesel History



Diesel Futures Fwd Curve



Crude

	WTI	Change	Brent	Change	Vs WTI				Vs Brent				Group / WCS
					Gulf Gas	Gulf Diesel	3/2/1	5/3/2	Gulf Gas	Gulf Diesel	3/2/1	5/3/2	3/2/1
7/25	\$104.46	-\$0.93	\$106.95	-\$0.24	\$19.25	\$20.40	\$19.63	\$19.71	\$17.45	\$18.60	\$17.83	\$17.91	47.82
7/24	\$105.39	-\$1.84	\$107.19	-\$1.23	\$19.25	\$20.40	\$19.63	\$19.71	\$17.45	\$18.60	\$17.83	\$17.91	47.82
7/23	\$107.23	\$0.32	\$108.42	\$0.27	\$17.90	\$20.06	\$18.62	\$18.77	\$16.71	\$18.87	\$17.43	\$17.58	48.16
7/22	\$106.91	-\$1.14	\$108.15	\$0.08	\$19.56	\$20.35	\$19.83	\$19.88	\$18.32	\$19.11	\$18.59	\$18.64	49.40
7/19	\$108.05	\$0.01	\$108.07	-\$0.63	\$21.29	\$20.21	\$20.93	\$20.86	\$21.27	\$20.19	\$20.91	\$20.84	52.28

Refinery Margins

Economic Indicators

Commodity Futures

	Settle	Change		Settle	Change
S&P 500	1,686	-6.45	Ethanol	2.346	-0.040
DJIA	15,542	-25.50	NatGas	3.707	0.01
Nasdaq	3,580	0.33	Gold	1,319	-1.20
EUR/USD	1.3238	0.0038	Silver	20	-0.11
USD Index	82.08	-0.21	Copper	3.17	-0.02
US Treasury 10 Year Yld	2.60%	0.01	FCOJ	146.00	3.95
Spanish 10 Year Yld	4.64%	0.00	Corn	503.25	-5.00
S&P Volatility Index (VIX)	13.18	0.52	Soy	1,363	-30.00
Baltic Dry Freight Index	1,117	-10.00	Wheat	651.75	-1.50

Gulf Coast ULSD Fwd Price Indication

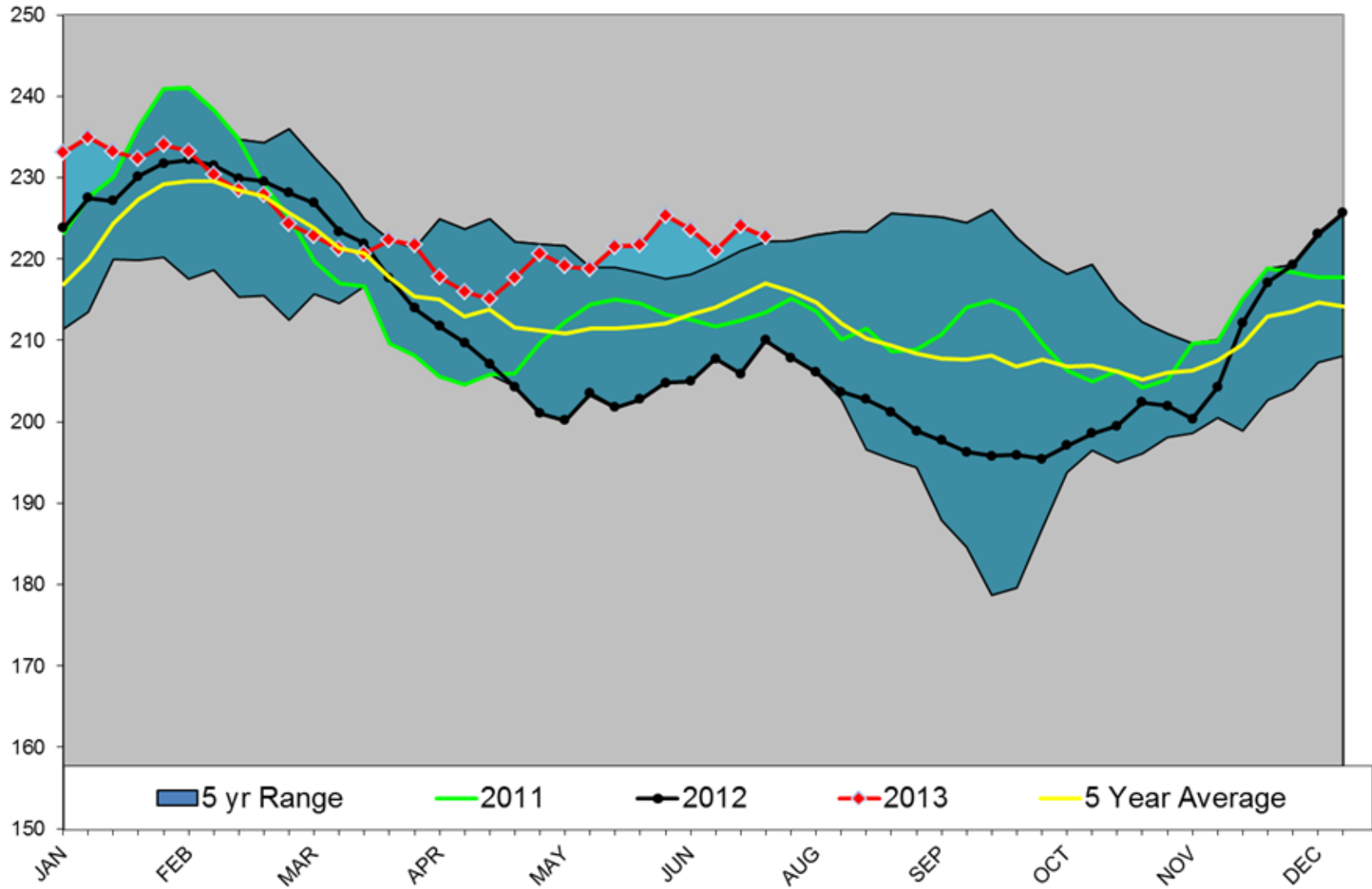
Indicative forward prices for ULSD at Gulf Coast area terminals. Prices are estimates only.

Del. Month	Price	Differential	3 Mo. Avg.	6 Mo. Avg
AUG3	\$3.1578	\$0.1070		
SEP3	\$3.1623	\$0.1100		
OCT3	\$3.1470	\$0.0965	\$3.1557	
NOV3	\$3.1310	\$0.0842		
DEC3	\$3.1124	\$0.0682		
JAN4	\$3.1248	\$0.0884	\$3.1227	\$3.1392
FEB4	\$3.1170	\$0.0976		
MAR4	\$3.1048	\$0.1056		
APR4	\$3.0855	\$0.1039	\$3.1024	
MAY4	\$3.0701	\$0.1047		
JUN4	\$3.0584	\$0.1040		
JUL4	\$3.0564	\$0.1022	\$3.0616	\$3.0820
12 Month Avg	\$3.1106	\$0.0977		

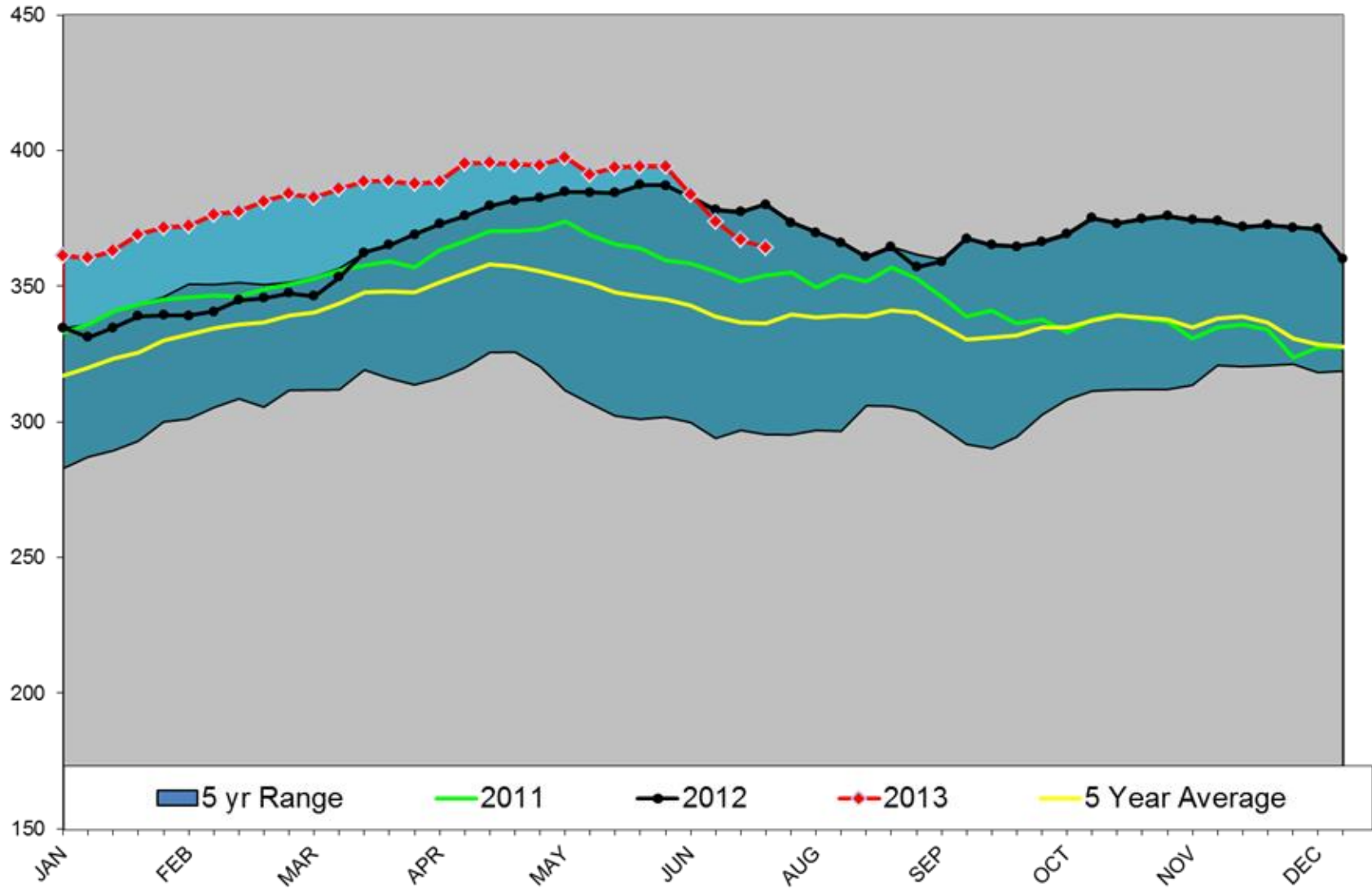
*SOURCES: Nymex, CBOT, NYSE, ICE, NASDAQ, CME Group, CBOE, Reuters. Prices delayed.

Disclaimer: The information contained herein is derived from multiple sources believed to be reliable. However, this information is not guaranteed as to its accuracy or completeness. No responsibility is assumed for use of this material and no express or implied warranties or guarantees are made. This material and any view or comment expressed herein are provided for informational purposes only and should not be construed in any way as an inducement or recommendation to buy or sell products, commodity futures or options contracts.

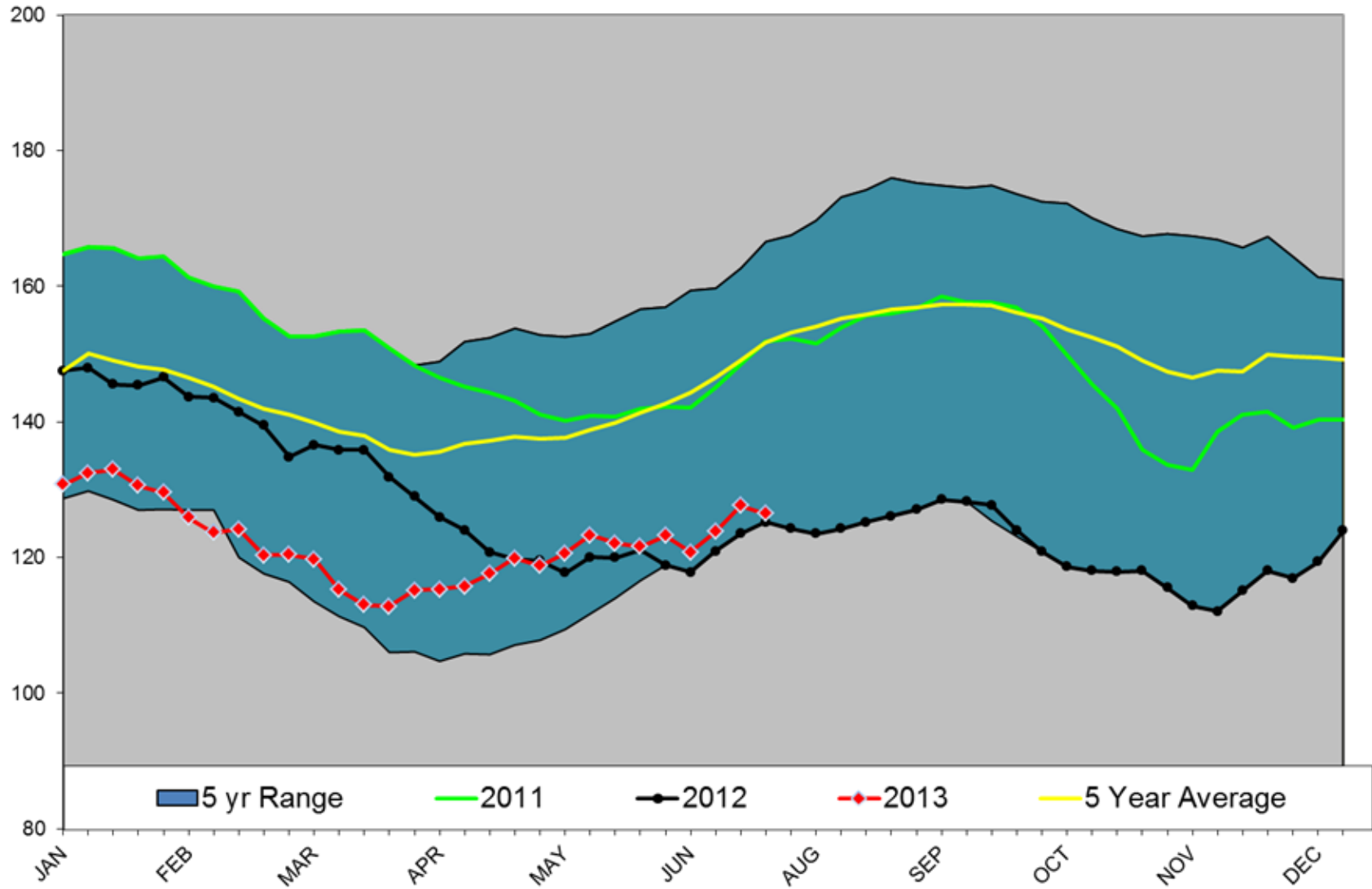
Gasoline TOTAL US



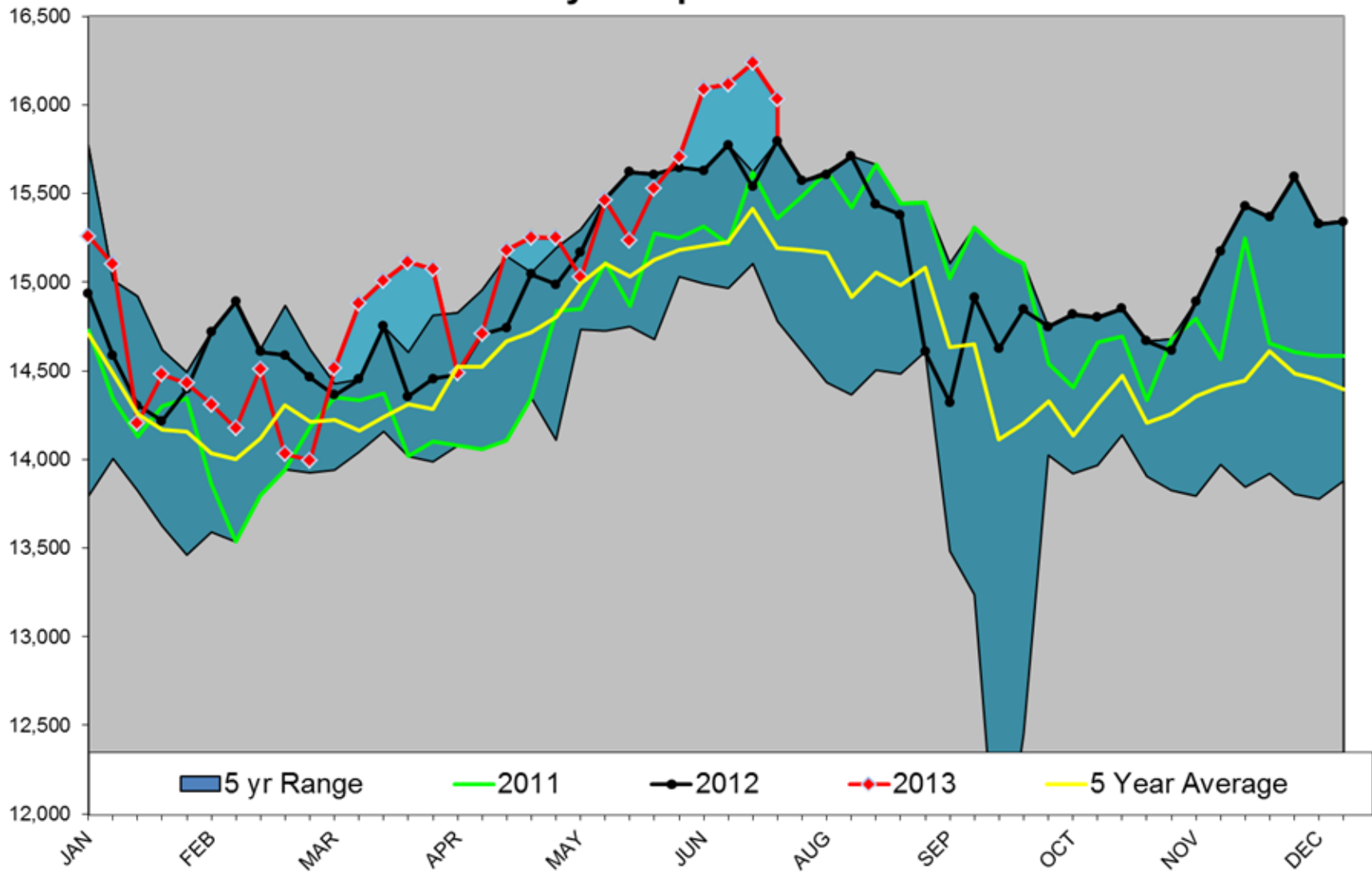
Crude Stocks TOTAL US



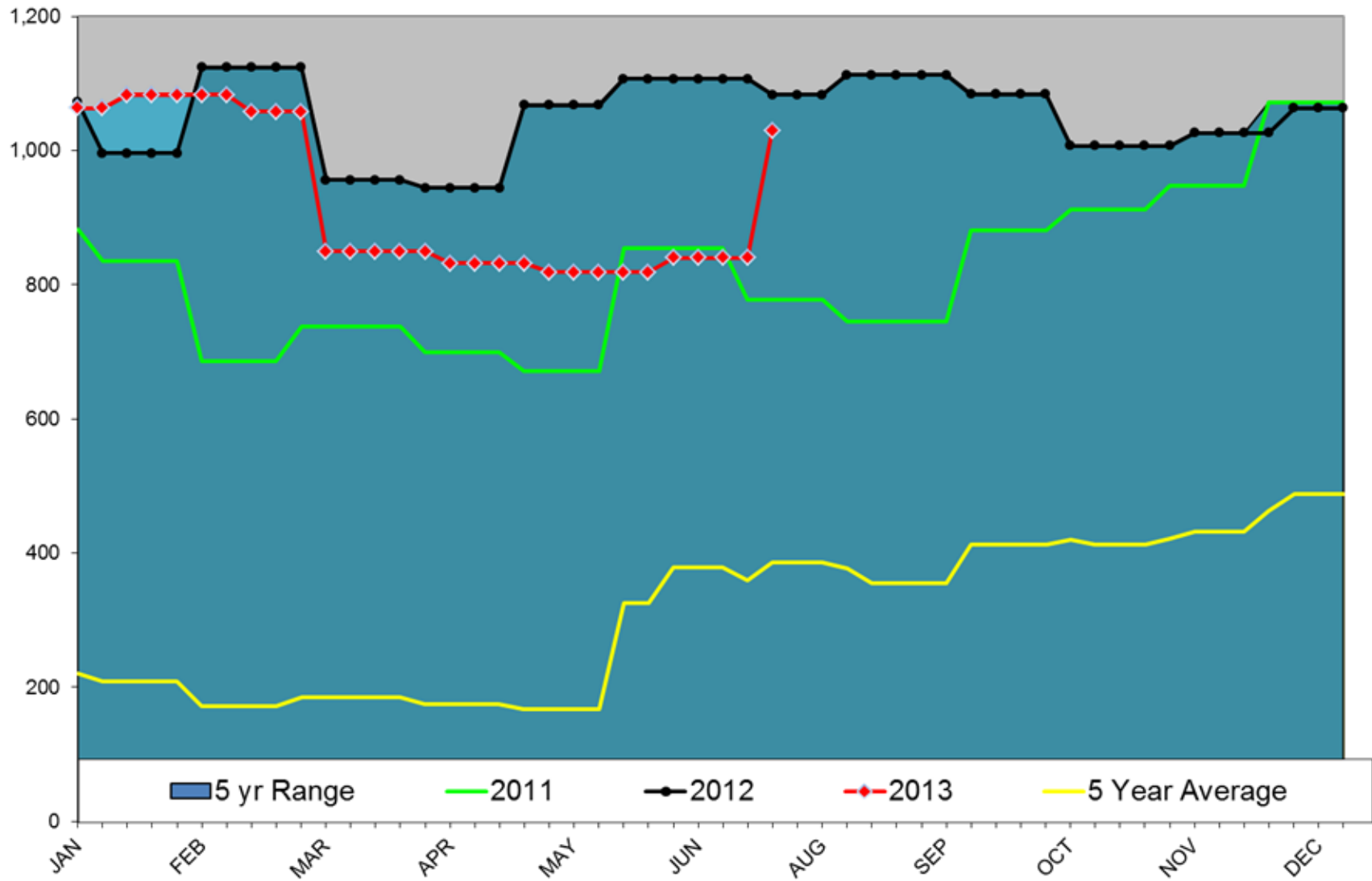
Diesel TOTAL US



Refinery Thruput TOTAL US



DIESEL EXPORTS



Crude Output

