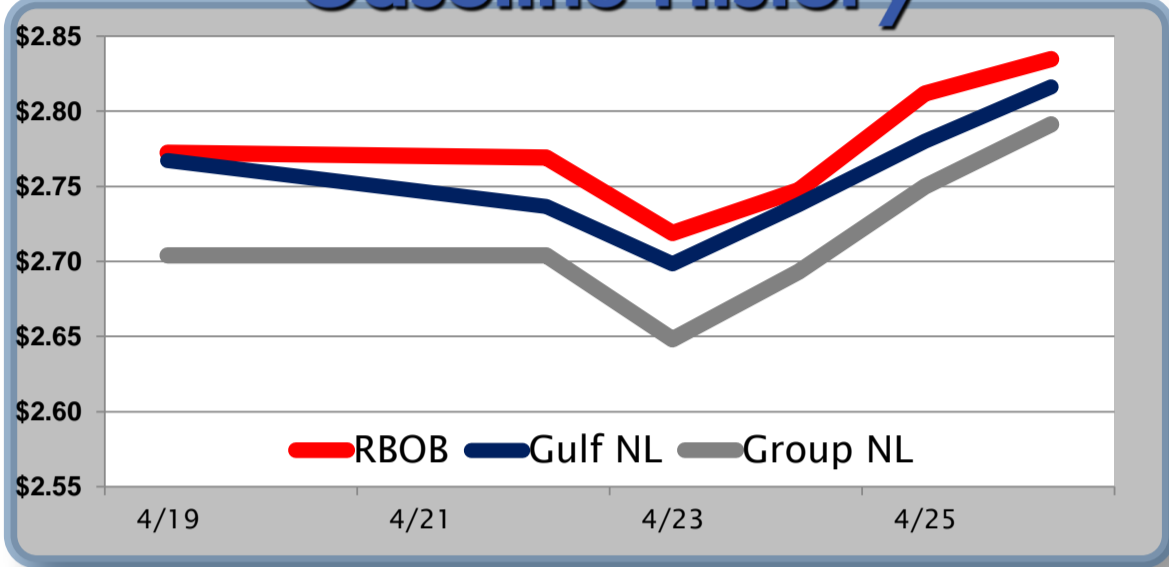


Gasoline

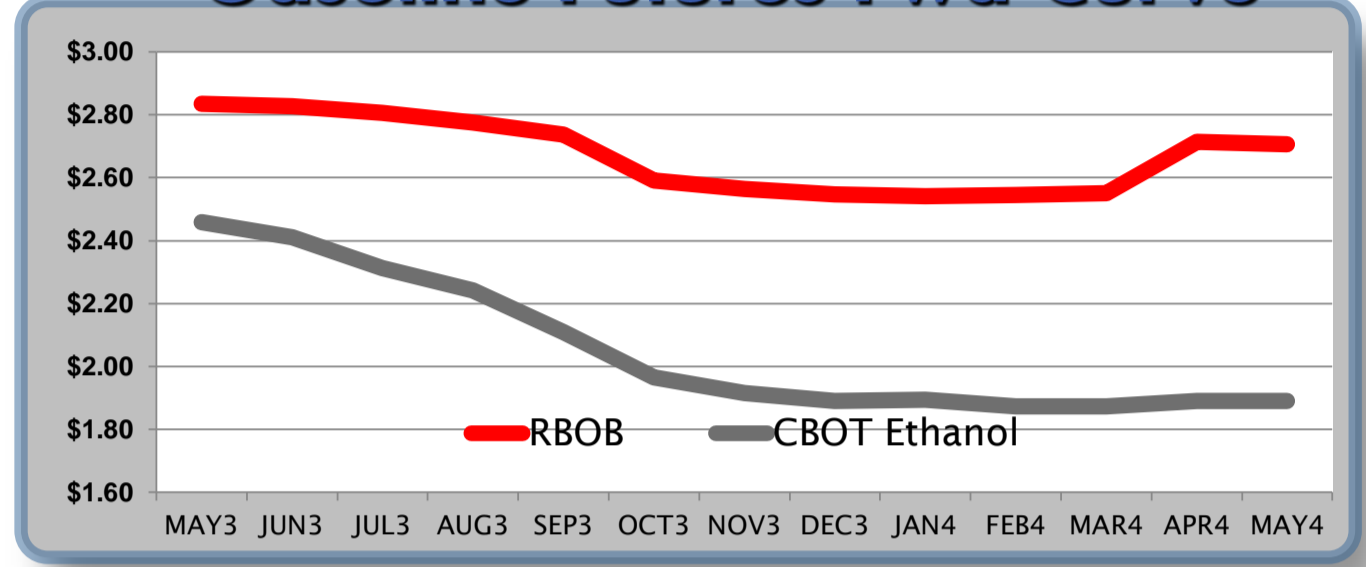
	RBOB	Change	Gulf NL	Change	Group NL	Change	Gulf Basis	Group Basis
4/29	\$2.8147	-\$0.0202	\$2.7962		\$2.7711			
4/26	\$2.8349	\$0.0231	\$2.8164	\$0.0364	\$2.7913	\$0.0414	-\$1.50	-\$4.00
4/25	\$2.8118	\$0.0644	\$2.7800	\$0.0423	\$2.7499	\$0.0568	-\$2.80	-\$5.70
4/24	\$2.7474	\$0.0284	\$2.7377	\$0.0393	\$2.6931	\$0.0448	-\$1.50	-\$6.05
4/23	\$2.7190	-\$0.0504	\$2.6984	-\$0.0384	\$2.6483	-\$0.0559	-\$2.05	-\$7.05
4/22	\$2.7694	-\$0.0030	\$2.7368	-\$0.0305	\$2.7042	\$0.0000	-\$3.70	-\$6.95
4/19	\$2.7724	\$0.0169	\$2.7673	\$0.0268	\$2.7042	\$0.0262	-\$0.55	-\$6.85

RBOB Technicals			Resistance	
Indicator	Direction			
MACD	Bottoming	2.9860	50 Day MA	
Stochastics	Overbought	2.8903	200 Day MA	
RSI	Bearish	2.7025	April Low	
ADX	Neutral	2.6915	2013 Low	
Momentum	Neutral		Support	
Bias:	Neutral			

Gasoline History



Gasoline Futures Fwd Curve

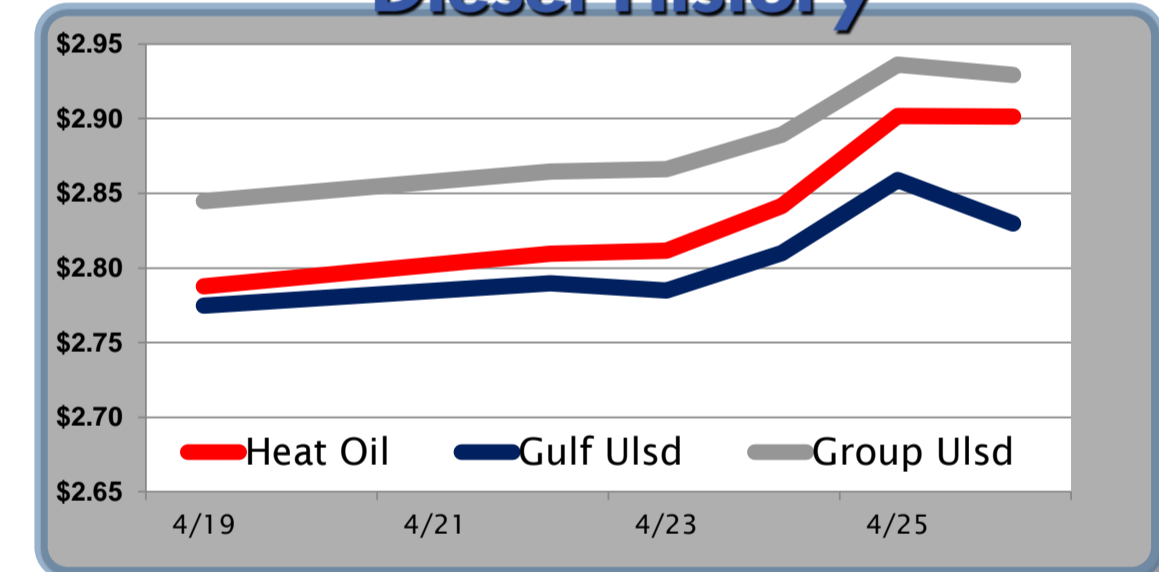


Diesel

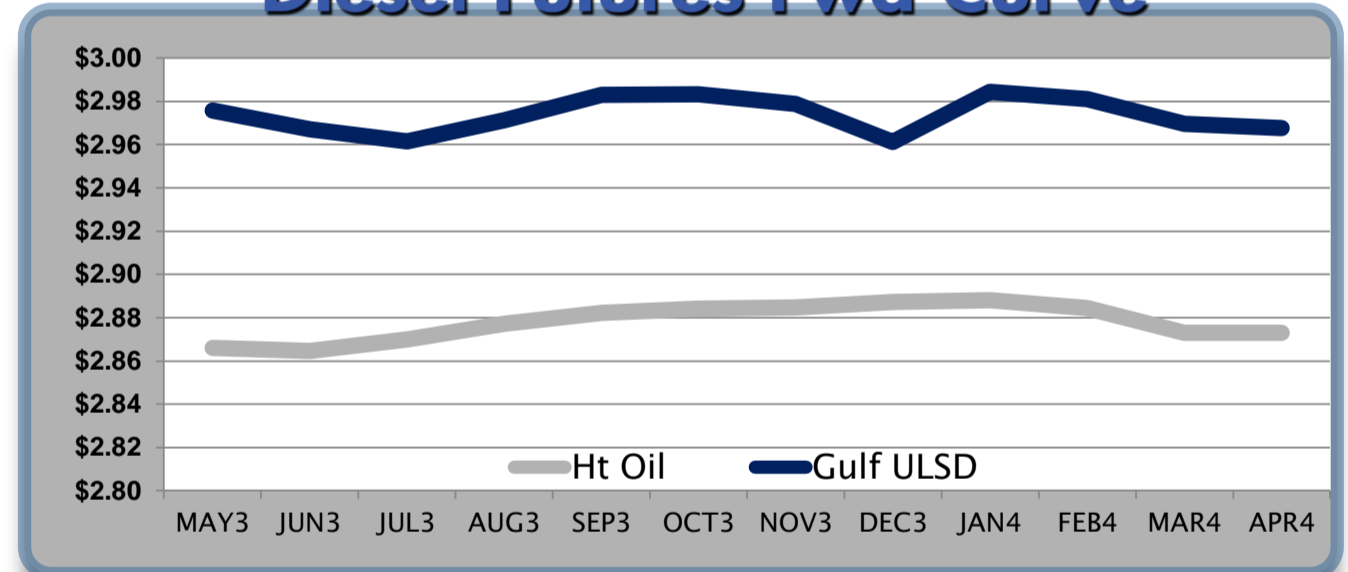
	Heat Oil	Change	Gulf Ulstd	Change	Group Ulstd	Change	Gulf Basis	Group Basis
4/29	\$2.8845	-\$0.0167	\$2.8130		\$2.9125			
4/26	\$2.9012	-\$0.0005	\$2.8297	-\$0.0290	\$2.9292	-\$0.0070	-\$7.15	\$2.80
4/25	\$2.9017	\$0.0604	\$2.8587	\$0.0489	\$2.9362	\$0.0469	-\$4.30	\$3.55
4/24	\$2.8413	\$0.0296	\$2.8098	\$0.0251	\$2.8893	\$0.0231	-\$3.15	\$4.70
4/23	\$2.8117	\$0.0023	\$2.7847	-\$0.0052	\$2.8662	\$0.0018	-\$2.70	\$5.55
4/22	\$2.8094	\$0.0218	\$2.7899	\$0.0153	\$2.8644	\$0.0198	-\$1.95	\$5.40
4/19	\$2.7876	\$0.0085	\$2.7746	\$0.0105	\$2.8446	\$0.0105	-\$1.30	\$5.80

HO Technicals			Resistance	
Indicator	Direction			
MACD	Bottoming	3.0294	200 Day MA	
Stochastics	Overbought	3.0016	100 Day MA	
RSI	Neutral	2.7255	April Low	
ADX	Neutral	2.7	Prior Support	
Momentum	Neutral		Support	
Bias:	Neutral			

Diesel History



Diesel Futures Fwd Curve



Crude

	WTI	Change	Brent	Change	Vs WTI				Vs Brent				Group / WCS
					Gulf Gas	Gulf Diesel	3/2/1	5/3/2	Gulf Gas	Gulf Diesel	3/2/1	5/3/2	3/2/1
4/29	\$93.33	\$0.33	\$103.07	-\$0.09	\$25.29	\$25.85	\$25.48	\$25.51	\$15.13	\$15.69	\$15.32	\$15.35	40.23
4/26	\$93.00	-\$0.64	\$103.16	-\$0.25	\$23.12	\$26.43	\$24.22	\$24.44	\$13.35	\$16.66	\$14.45	\$14.67	39.31
4/25	\$93.64	\$2.21	\$103.41	\$1.68	\$23.55	\$26.58	\$24.56	\$24.76	\$13.25	\$16.28	\$14.26	\$14.46	39.37
4/24	\$91.43	\$2.25	\$101.73	\$1.42	\$24.15	\$27.78	\$25.36	\$25.60	\$13.02	\$16.65	\$14.23	\$14.47	39.47

Refinery Margins

Economic Indicators

Commodity Futures

	Settle	Change		Settle	Change
S&P 500	1,582	-2.92	Ethanol	2.459	0.006
DJIA	14,713	11.75	NatGas	4.292	0.07
Nasdaq	3,279	-10.73	Gold	1,476	21.90
EUR/USD	1.3102	0.0073	Silver	2,428	52.20
USD Index	82.05	-0.45	Copper	322.60	4.15
US Treasury 10 Year Yld	1.66%	-0.01	FCOJ	140.35	-4.20
Spanish 10 Year Yld	4.20%	-0.01	Corn	654.25	10.25
S&P Volatility Index (VIX)	13.61	-0.52	Soy	1,430	-0.75
Baltic Dry Freight Index	871	-1.00	Wheat	694.75	6.00

Gulf Coast ULSD Fwd Price Indication

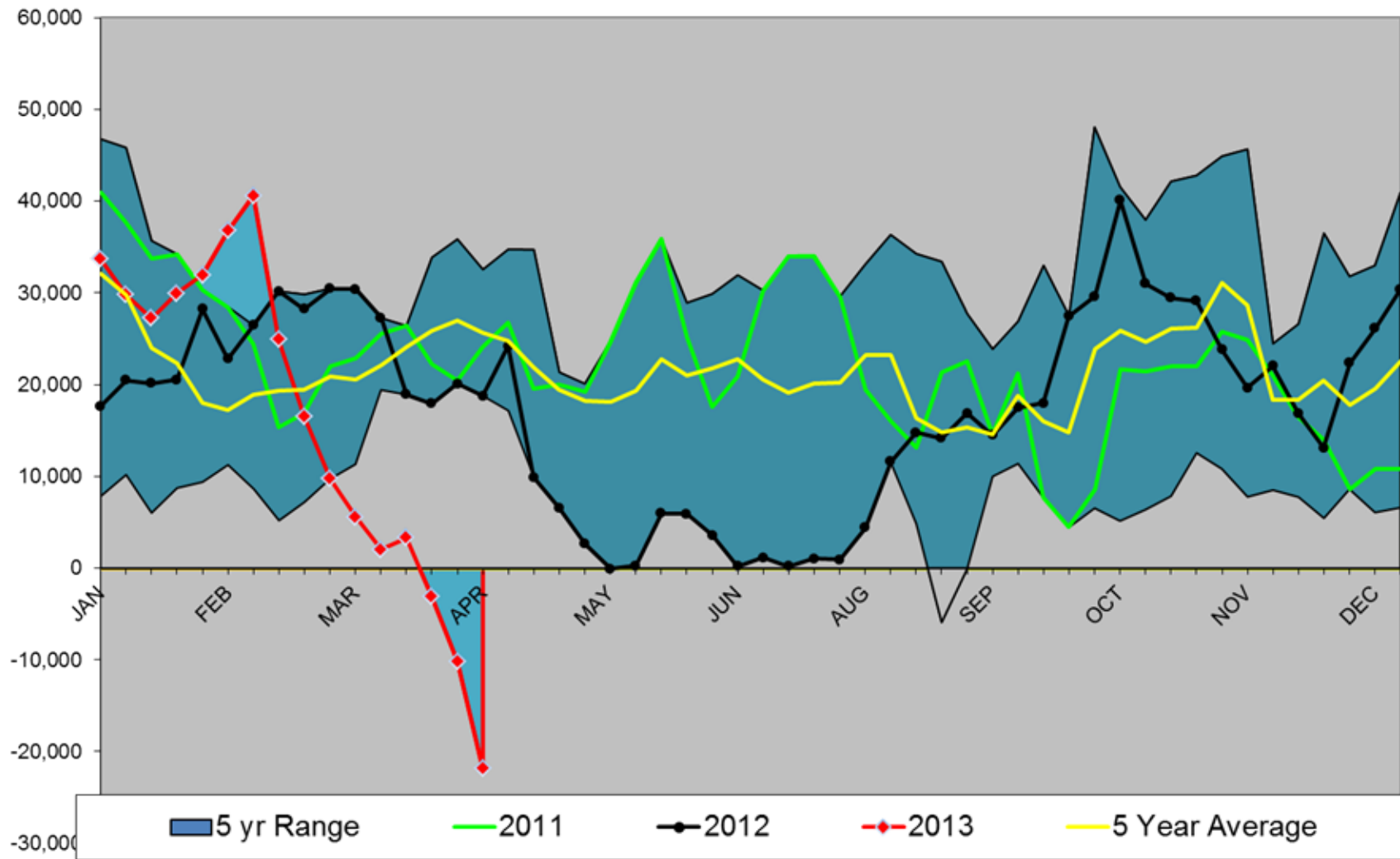
Indicative forward prices for ULSD at Gulf Coast area terminals. Prices are estimates only.

Del. Month	Price	Differential	3 Mo. Avg.	6 Mo. Avg
MAY3	\$2.9757	\$0.1096		
JUN3	\$2.9670	\$0.1024		
JUL3	\$2.9615	\$0.0916	\$2.9681	
AUG3	\$2.9713	\$0.0942		
SEP3	\$2.9829	\$0.1006		
OCT3	\$2.9834	\$0.0991	\$2.9792	\$2.9736
NOV3	\$2.9789	\$0.0942		
DEC3	\$2.9613	\$0.0741		
JAN4	\$2.9844	\$0.0964	\$2.9749	
FEB4	\$2.9810	\$0.0965		
MAR4	\$2.9696	\$0.0965		
APR4	\$2.9676	\$0.1040	\$2.9727	\$2.9738
12 Month Avg	\$2.9737	\$0.0966		

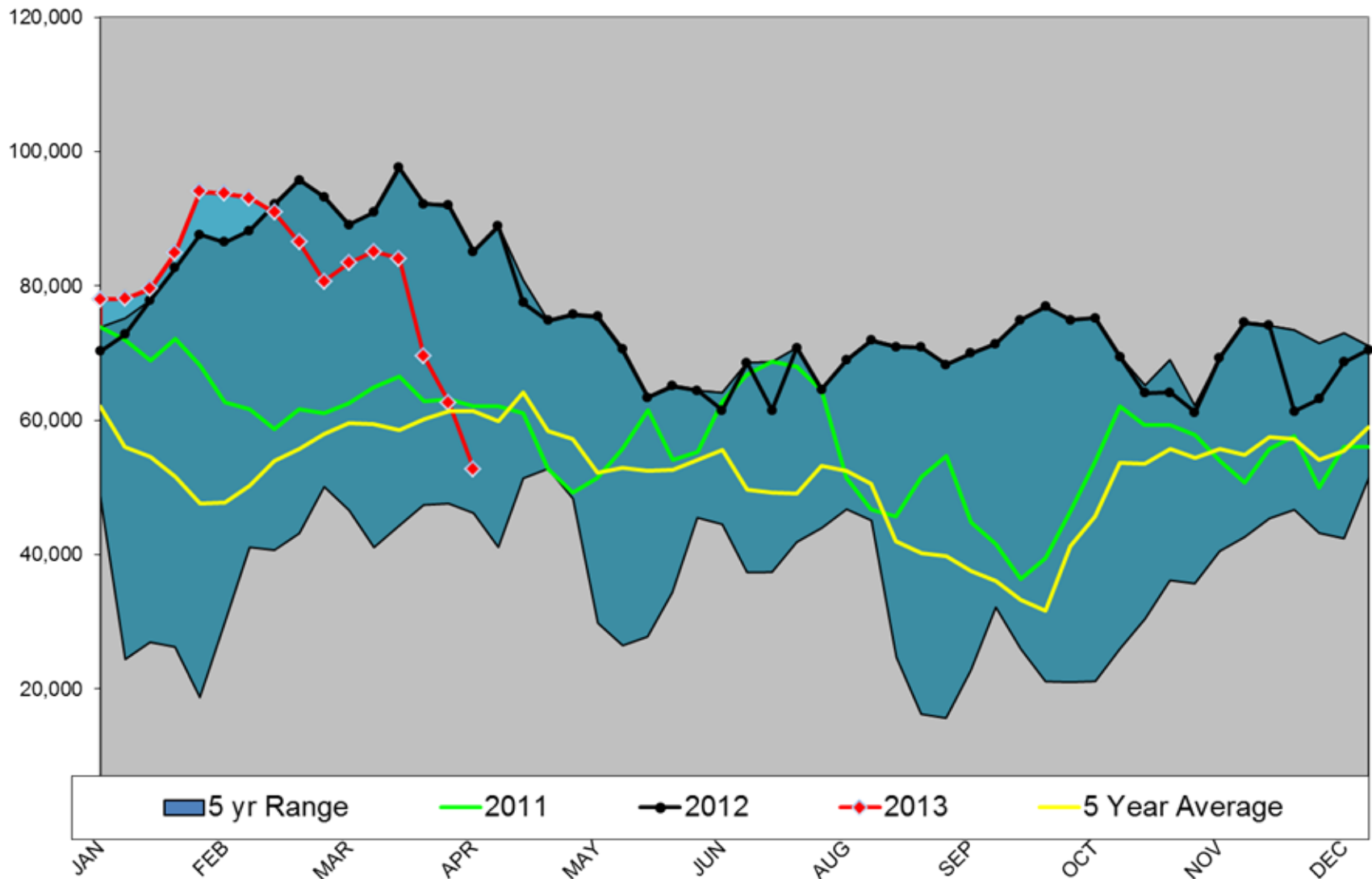
*SOURCES: Nymex, CBOT, NYSE, ICE, NASDAQ, CME Group, CBOE, Reuters. Prices delayed.

Disclaimer: The information contained herein is derived from multiple sources believed to be reliable. However, this information is not guaranteed as to its accuracy or completeness. No responsibility is assumed for use of this material and no express or implied warranties or guarantees are made. This material and any view or comment expressed herein are provided for informational purposes only and should not be construed in any way as an inducement or recommendation to buy or sell products, commodity futures or options contracts.

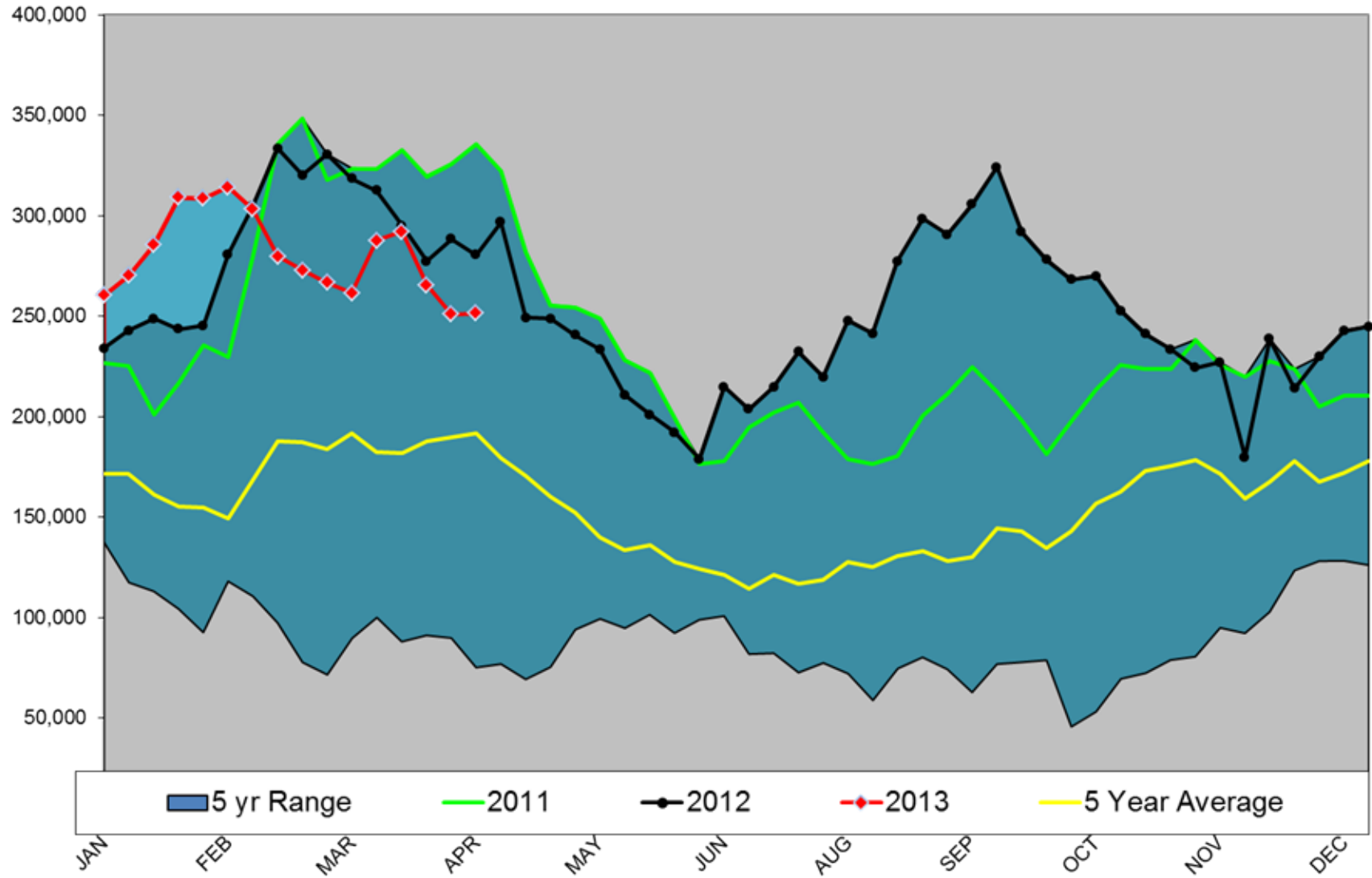
HO NON-COMM NET POSITION



RBOB NON-COMM NET POSITION



WTI NON-COMM NET POSITION



Brent Managed Net Position

